

# Ramelius Resources Limited

**Mark Zeptner**  
Managing Director

ASX:RMS

**RAMELIUS**  
RESOURCES



# INVESTOR PRESENTATION

Resources Rising Stars Conference – June 2019 –



# QUALIFICATION

---

## Forward Looking Statements

This presentation contains certain forward looking statements with respect to Ramelius Resources Ltd's (Ramelius) financial condition, results of operations, production targets and other matters that are subject to various risks and uncertainties. Actual results, performance or achievements could be significantly different from those expressed in or implied by those forward looking statements. Such forward looking statements are not guarantees of future performance and involve known and unknown risks, uncertainties and other factors that are beyond the control of Ramelius that may cause actual results to differ materially from those expressed in the forward looking statements contained herein. Ramelius gives no warranties in relation to the information and statements within this presentation.

## Competent Persons Statement

The Information in this report that relates to Exploration Results, Mineral Resources and Ore Reserves is based on information compiled by Kevin Seymour (Exploration Results), Rob Hutchison (Mineral Resources) and Duncan Coutts (Ore Reserves), who are Competent Persons and Members of The Australasian Institute of Mining and Metallurgy. Kevin Seymour, Rob Hutchison and Duncan Coutts are full-time employees of the Company and have sufficient experience that is relevant to the style of mineralisation and type of deposit under consideration and to the activity being undertaken to qualify as a Competent Person as defined in the 2012 Edition of the "Australasian Code for Reporting of Exploration Results, Mineral Resources and Ore Reserves". Kevin Seymour, Rob Hutchison and Duncan Coutts consent to the inclusion in this report of the matters based on their information in the form and context in which it appears.

# CORPORATE SUMMARY – ADDED TO THE ASX300 IN MARCH 2019

## Corporate Structure: at 27 May 2019

Shares on Issue	656M (3M Unlisted Options, 10M Rights)
Market Cap	A\$584M @ A\$0.89 per share
Cash & Gold	A\$104.7M at 31 March 2019
Debt	Nil
Enterprise Value	A\$479M
Liquidity	4.5M shares (50 day average)

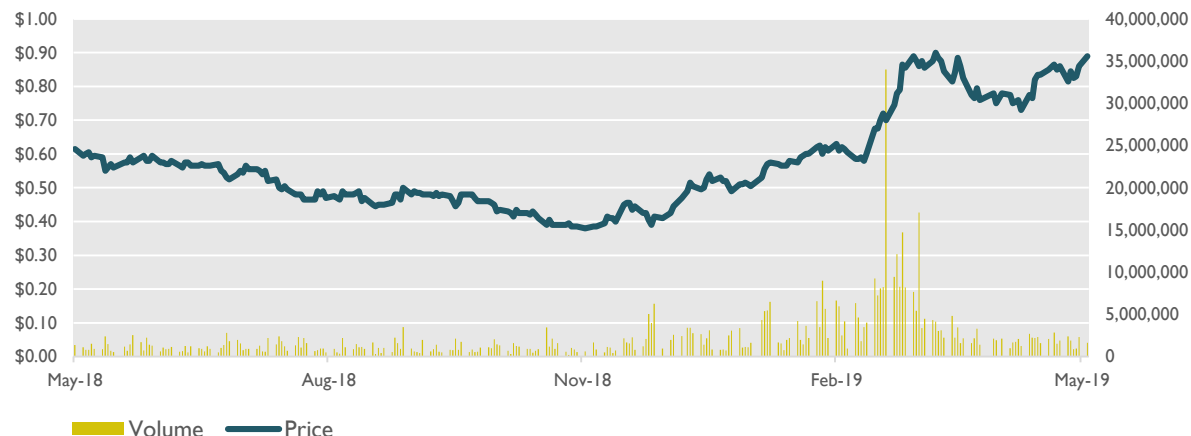
## Production Guidance

FY2019 Guidance	190-210,000oz @ AISC A\$1,175-1,225/oz
FY2020 Estimate	230-250,000oz*
Mineral Resources	3.476Moz at 30 June 18 (excludes Marda & Tampia)
Total Ore Reserves	0.698Moz at 30 June 18 (excludes Marda & Tampia)

## Major Shareholders: at 29 April 2019

Ruffer LLP	7.68%
Van Eck Associates Corporation	6.44%
Vinva Investment Management Limited	5.23%
Dimensional Fund Advisors LP	3.69%
Deutsche Bank AG Group	2.87%

## Share Price Performance







## Board

Kevin Lines	Non Executive Chairman
Mark Zeptner	Managing Director
Mike Bohm	Non Executive Director
David Southam	Non Executive Director
Richard Jones	Manager Legal / Company Secretary

## Management

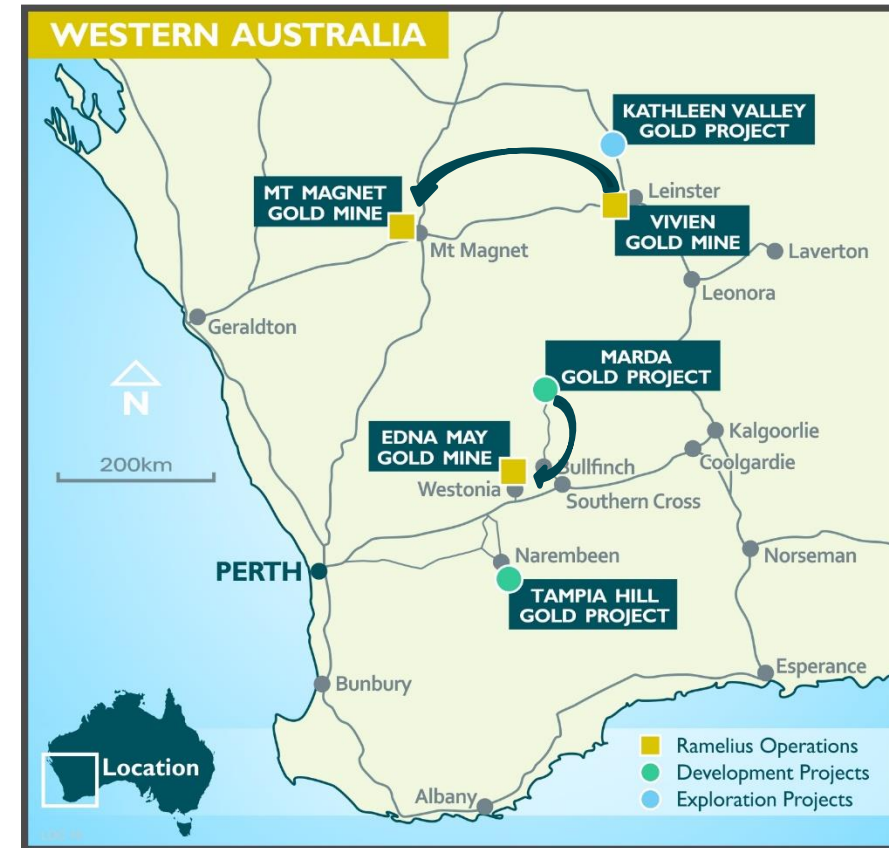
Duncan Coutts	Chief Operating Officer
Tim Manners	Chief Financial Officer
Kevin Seymour	GM Exploration & BD
Rob Hutchison	Manager Mine Geology
Liz Jones	GM - Mount Magnet
Paul Marlow	Mine Manager - Vivien
Tim Blyth	GM - Edna May
TBA	Project Manager - Marda

## **RAMELIUS – ADDING VALUE VIA ACQUISITION AND EFFICIENT MINING**

	<ul style="list-style-type: none"><li>• Recent acquisitions provide additional mine life and maximise the value of existing infrastructure</li></ul>
	<ul style="list-style-type: none"><li>• Strategic acquisitions under active consideration – new production centre</li></ul>
	<ul style="list-style-type: none"><li>• Strong balance sheet and cashflows allow ability to consider wide range of opportunities without compromising existing operations</li></ul>
	<ul style="list-style-type: none"><li>• Continued focus on efficient mining practices despite growing business</li></ul>

# OPERATIONS SUMMARY

- **Western Australia based gold producer operating from two main production centres - Mt Magnet and Edna May**
- **The Mt Magnet production centre comprises:**
  - A number of open pit and underground operations at Mt Magnet itself
  - Complemented by high grade ore hauled from the Vivien underground mine
  - Mt Magnet – 115,000oz Au at an AISC of A\$1,150-1,200/oz for FY19\*
- **The Edna May production centre comprises:**
  - Edna May underground operation, Greenfinch open pit project & stockpiles
  - Edna May – 82,000oz Au at an AISC of A\$1,200-1,250/oz for FY19\*
- **The Tampia and Marda Projects have been recently acquired**
  - Marda is currently being developed, with ore to be hauled to Edna May
  - Tampia to either be developed as a stand-alone project with on-site processing facility or as a satellite ore source for Edna May





## STRATEGIC ACQUISITIONS

✓ **Edna May acquired in late 2017 for A\$38.4M from Evolution Mining Ltd**

✓ **Since acquisition:**

- Produced 137,700 ounces of gold
- AISC of A\$1,219/oz
- Generated >A\$70M in free cash, 84% ROI
- and there is plenty more to come...

✓ **Edna May firmly established as a new production centre**

✓ **Edna May infrastructure a strategic asset in its own right**



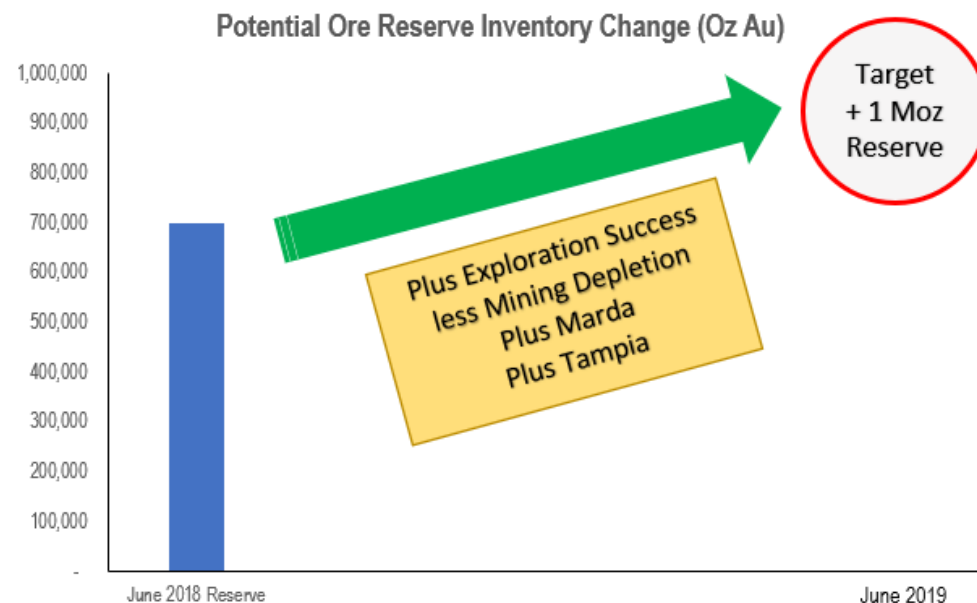
Edna May Processing Plant with Stage 2 open pit in background

## RECENT ACQUISITIONS

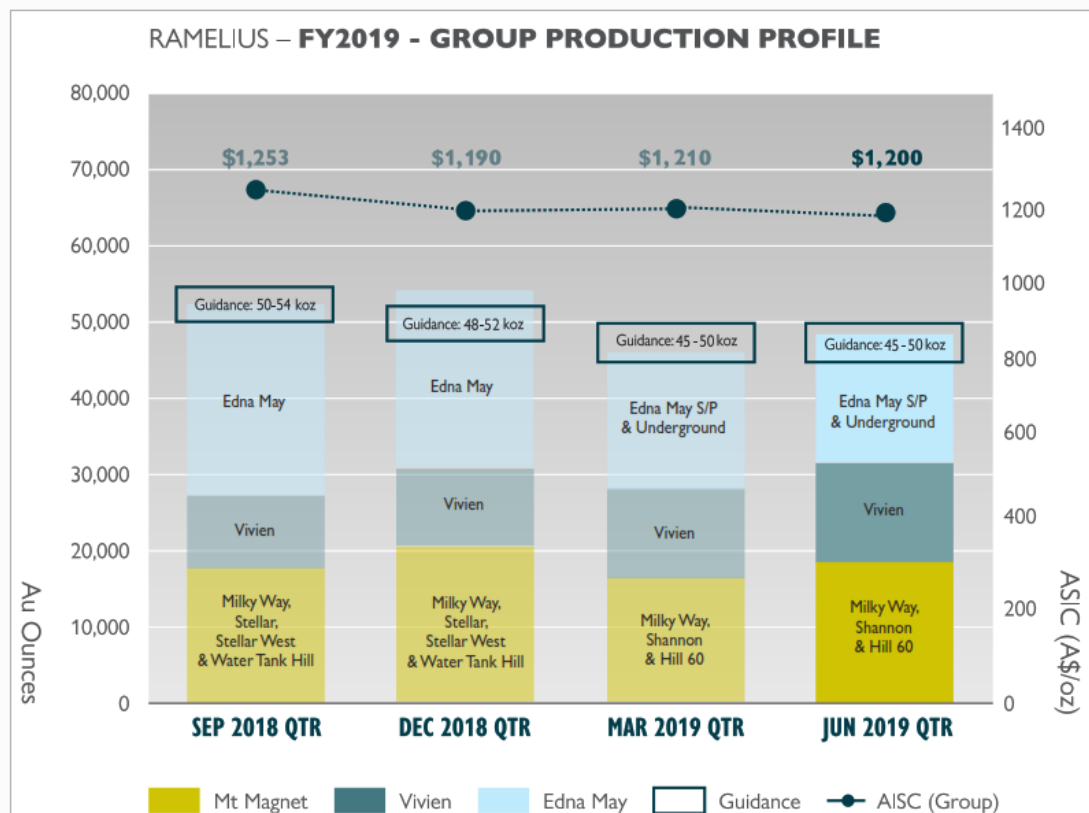
- ✓ Tampia Hill and Marda Projects now being integrated – aiming to achieve Ore Reserve position in excess of 1,000,000oz\*



Tampia Hill Gold Project



# FOCUS ON MINING EXCELLENCE AND COST MINIMISATION



## FY2019:

- Guidance for full year FY2019 remains at 190-210,000oz
- AISC forecast remains at A\$1,175-1,225/oz
- FY2019 guidance maintained without incorporating any ounces from Greenfinch
- Production at Edna May Underground brought forward to offset delays at Greenfinch with LG stockpiles available
- Approvals for Greenfinch delayed into FY2020, impact being assessed

Project (A\$M)	Sept 18 Qtr (Actual)	Dec 18 Qtr (Actual)	Mar 19 Qtr (Actual)	Jun 19 Qtr (Forecast)	FY2019 (Forecast)
Mt Magnet open pit development	6.0	4.4	0.4	5.3	16.1
Mt Magnet underground development	0.3	3.4	6.1	7.9	17.7
Vivien underground development	-	0.2	1.0	-	1.2
Edna May Underground	-	-	0.7	4.7	5.4
Marda Open Pit	-	-	-	1.0	1.0
Exploration (all projects)	3.7	5.9	5.3	6.3	21.2
<b>Subtotal (Exploration &amp; development)</b>	<b>10.0</b>	<b>13.9</b>	<b>13.5</b>	<b>25.2</b>	<b>62.6</b>
Asset acquisition & sundry (including Marda)	4.3	1.7	11.6	-	17.6
Explaurum acquisition & loan	-	6.9	7.5	1.2	15.6
<b>Subtotal (Acquisitions)</b>	<b>4.3</b>	<b>8.6</b>	<b>19.1</b>	<b>1.2</b>	<b>33.2</b>
<b>TOTAL</b>	<b>14.3</b>	<b>22.5</b>	<b>32.6</b>	<b>26.4</b>	<b>95.8</b>



## FOCUS ON MINING EXCELLENCE AND COST MINIMISATION

- ✓ **FY2020 production estimate of 230-250,000oz\***
- ✓ **New Life of Mine Plan to be published in June 19 Quarter**



Mt Magnet Processing Plant



Mt Magnet Milky Way open pit



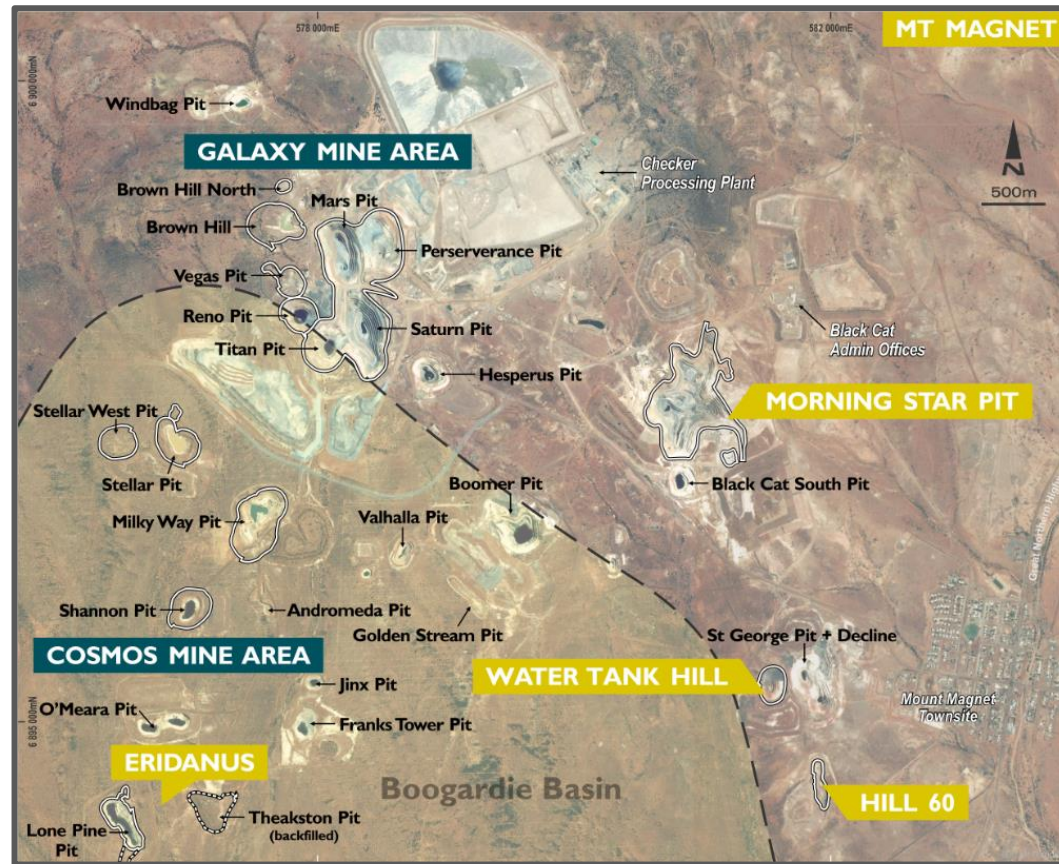
A photograph of an industrial facility, possibly a refinery or chemical plant, set against a dramatic sunset sky with orange and pink clouds. The facility includes large white storage tanks, complex piping, and a tall distillation column. In the foreground, there is a large pile of dark, rocky material. A semi-transparent circular overlay is positioned on the right side of the image, containing the text 'PROJECT SUMMARY' in bold black letters, with a short horizontal line centered below it.

## **PROJECT SUMMARY**

---



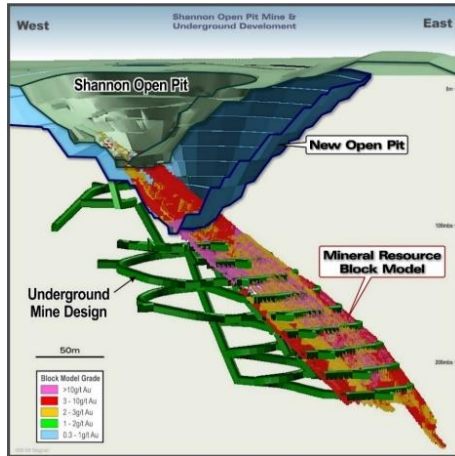
# MT MAGNET – KEEPS DELIVERING NEW RESOURCES



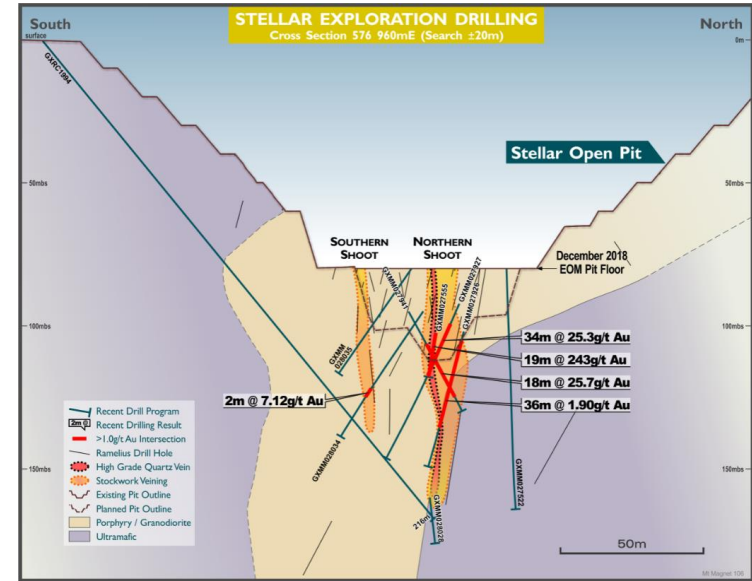
- **+6Moz gold camp, Ramelius since 2011**
- **Galaxy Mine Area**
  - 4 open pits complete 2011-2017
  - Further potential below Titan & Saturn pits
- **Cosmos Mine Area**
  - Milky Way open pit underway
  - Stellar open pits underway
  - Shannon open pit underway
  - Eridanus open pit development commenced
- **Water Tank Hill**
  - Water Tank Hill underground complete
  - Hill 60 production commencement imminent
- **Morning Star**
  - Both open pit & u/g resources
- **“Checker” Processing Plant**
  - 1.9Mtpa mill throughput



# MT MAGNET – SHANNON UNDERGROUND & STELLAR OPEN PIT



Shannon open pit floor



## ■ Updated Mineral Resource

- 770,000 tonnes @ 4.7 g/t Au for 115,000oz
- 25% increase on previous

## ■ Maiden Underground Ore Reserve

- 324,000 tonnes @ 5.2 g/t Au for 54,000oz

## ■ Quartz lode clearly seen in base of pit

## ■ Underground portal works commenced

## ■ Pit Extension Resource (>0.6g/t Au)

- 280,000 tonnes @ 2.4 g/t Au for 22,000oz

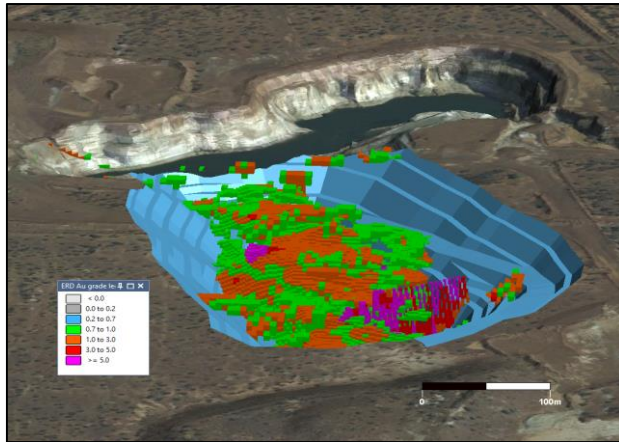
## ■ High grade lodes prevalent at Mt Magnet

## ■ Cutback vs Underground being assessed

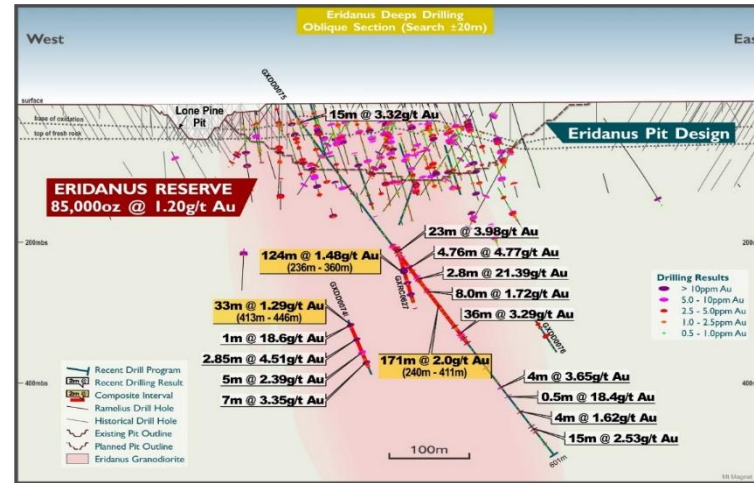




# MT MAGNET – ERIDANUS OPEN PIT & RESOURCE POTENTIAL



- Fresh open pit, lying between two existing pits
- Maiden Mineral Resource
  - 3,530,000 tonnes @ 1.3 g/t Au for 146,000oz
- Maiden Ore Reserve
  - 2,148,000 tonnes @ 1.2 g/t Au for 85,000oz
- Pre-strip commenced in April 2019
- Deeper potential currently being assessed



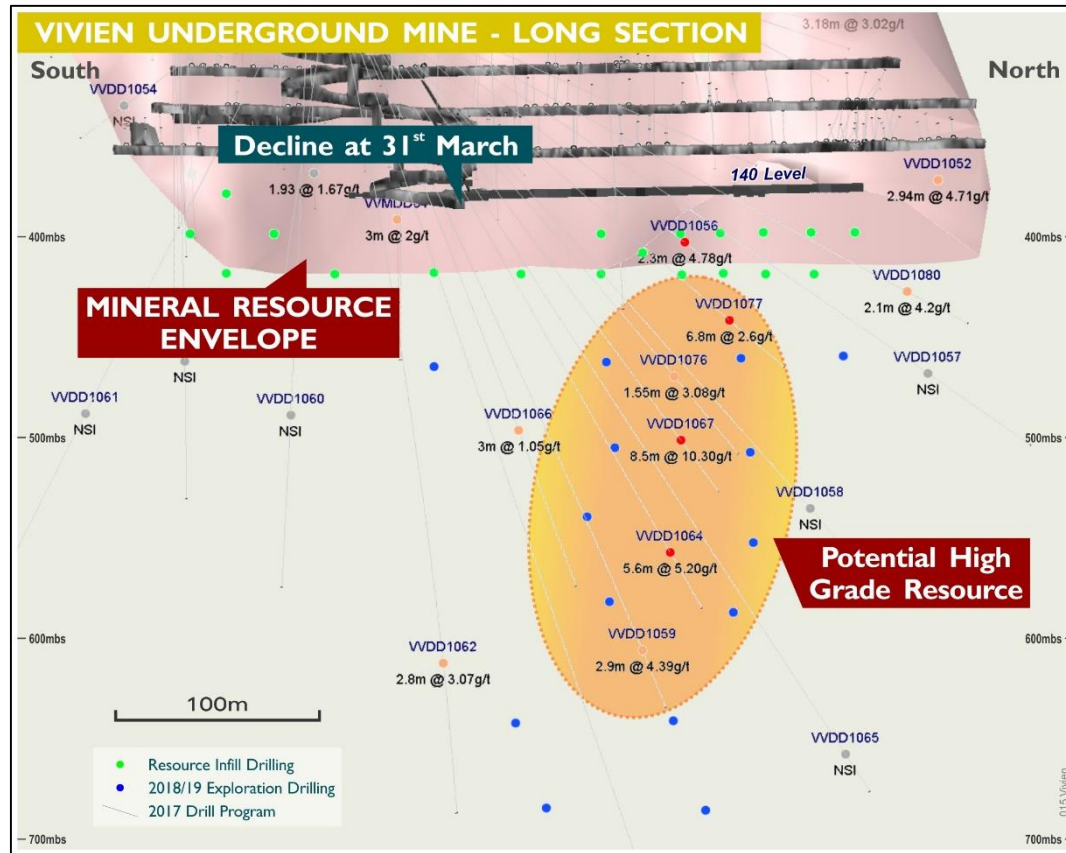
*“New style discoveries within a gold camp that has been around for over 100 years...”*

- 43m at 4.17 g/t Au from 27m in GXDD0084 (pre-collar) including 12m at 11.6 g/t Au
- 27m at 1.20 g/t Au from 264m in GXDD0084
- 14m at 2.45 g/t Au from 324m in GXDD0084
- 10m at 1.92 g/t Au from 384m in GXDD0084
- 12.6m at 5.39 g/t Au from 230.4m in GXDD0085
- 16m at 3.83 g/t Au from 373m in GXDD0085
- 32m at 2.26 g/t Au from 23m in GXDD0086 (pre-collar)
- 15m at 4.10 g/t Au from 385m in GXDD0086 and
- 7m at 6.31 g/t Au from 450m in GXDD0086\*





# VIVIEN – HIGH GRADE ORE HAULED TO MT MAGNET, AISC BELOW A\$1,000/oz

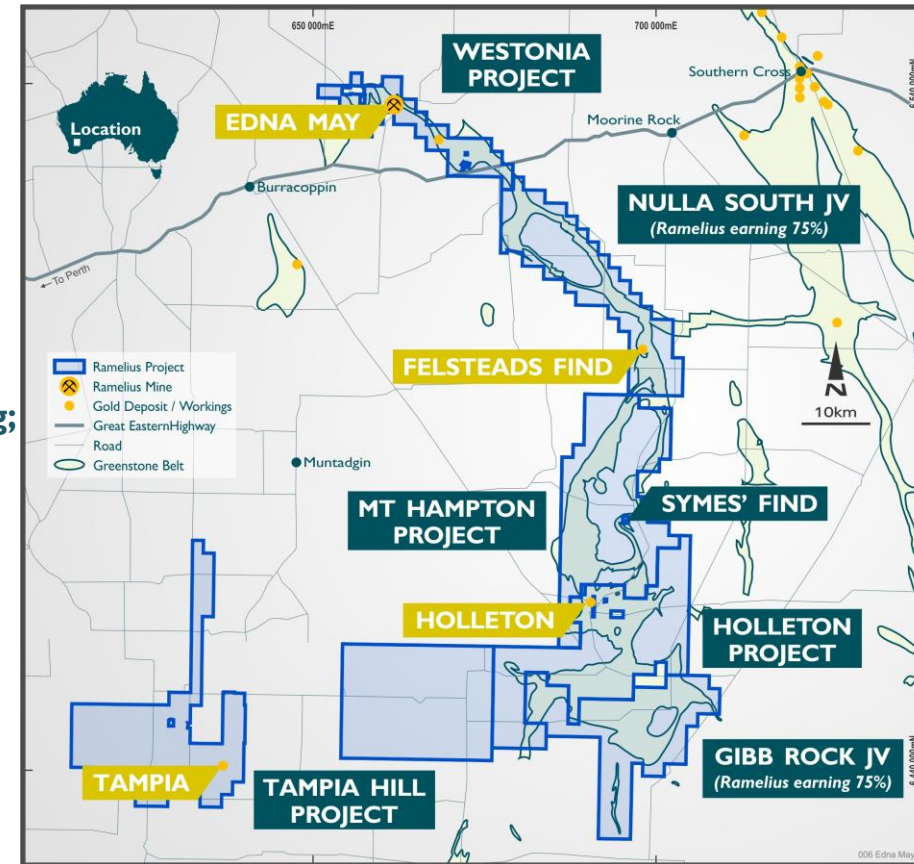


- Consistent producer at ~12.5koz per Quarter
- Produced 105koz project-to-date
- On track to return over A\$100M in cash: 10 times the initial investment
- Mineral Resource
  - 674,000t @ 5.9 g/t Au for 127,000 ounces
- Ore Reserve
  - 370,000t @ 6.5 g/t Au for 77,000 ounces
- Potential for lode to re-develop at depth
- Constructed underground drill drive for deeper drilling down to 700mbs
  - Green holes results imminent
  - Blue holes underway



# EDNA MAY – WESTONIA AND HOLLETON REGIONAL EXPLORATION

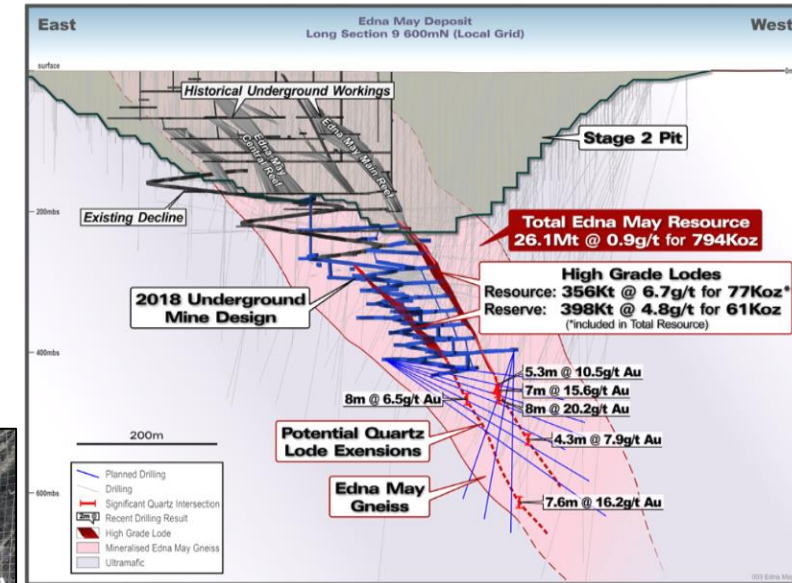
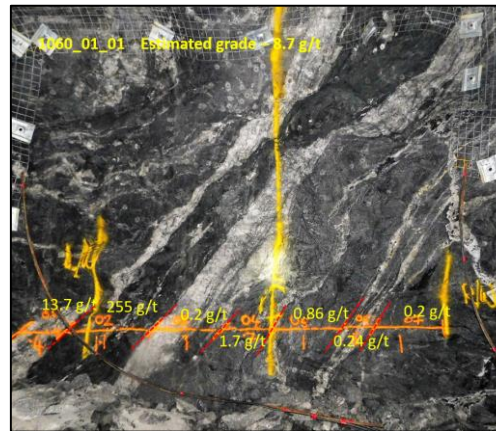
- Greenstone belts appear more extensive than previously mapped
- Ramelius has consolidated 130km of contiguous strike over Westonia/Holleton greenstone belts since acquiring Edna May
- Now extended 50km west to incorporate Tampia Hill Project
  - Planning to maintain active Aircore & RC drilling programmes throughout
- Symes' Find first significant discovery, latest drill results\* including:
  - Shallow oxide:
    - 8m at 17.05 g/t Au from 33m, including 3m at 42.01 g/t Au
    - 11m at 6.65 g/t Au from 8m, including 2m at 30.90 g/t Au
    - 7m at 11.62 g/t Au from 10m, including 3m at 23.56g/t Au
    - 12m at 6.79 g/t Au from 1m, including 2m at 33.85 g/t Au
  - Surface laterite:
    - 12m at 4.49 g/t Au from surface, including 2m at 23.35 g/t Au
    - 6m at 10.62 g/t Au from surface, including 2m at 30.20 g/t Au
    - 4m at 5.21 g/t Au from surface



# EDNA MAY – UNDERGROUND DEVELOPMENT UNDERWAY

- **Low capital cost, high grade production**
- **Open at depth – diamond drilling from surface commenced to extend**
- **Initial Ore Reserve**
  - 398,000 tonnes @ 4.8 g/t Au for 61,000 ounces
  - All intercepts opposite shown are not currently included in any Resource
- **Underground mining operations underway**
  - Ore development mining commenced along with decline development
  - Ore stoping (and full production) to commence late FY19
- **Key financials for initial mine plan**
  - Up-front Capital A\$5.9M
  - Operating Unit Cost A\$1,089/oz
  - Royalties A\$153/oz\*
  - AISC A\$1,242/oz

\*includes EVN's A\$100/oz Royalty, to start after 200koz produced





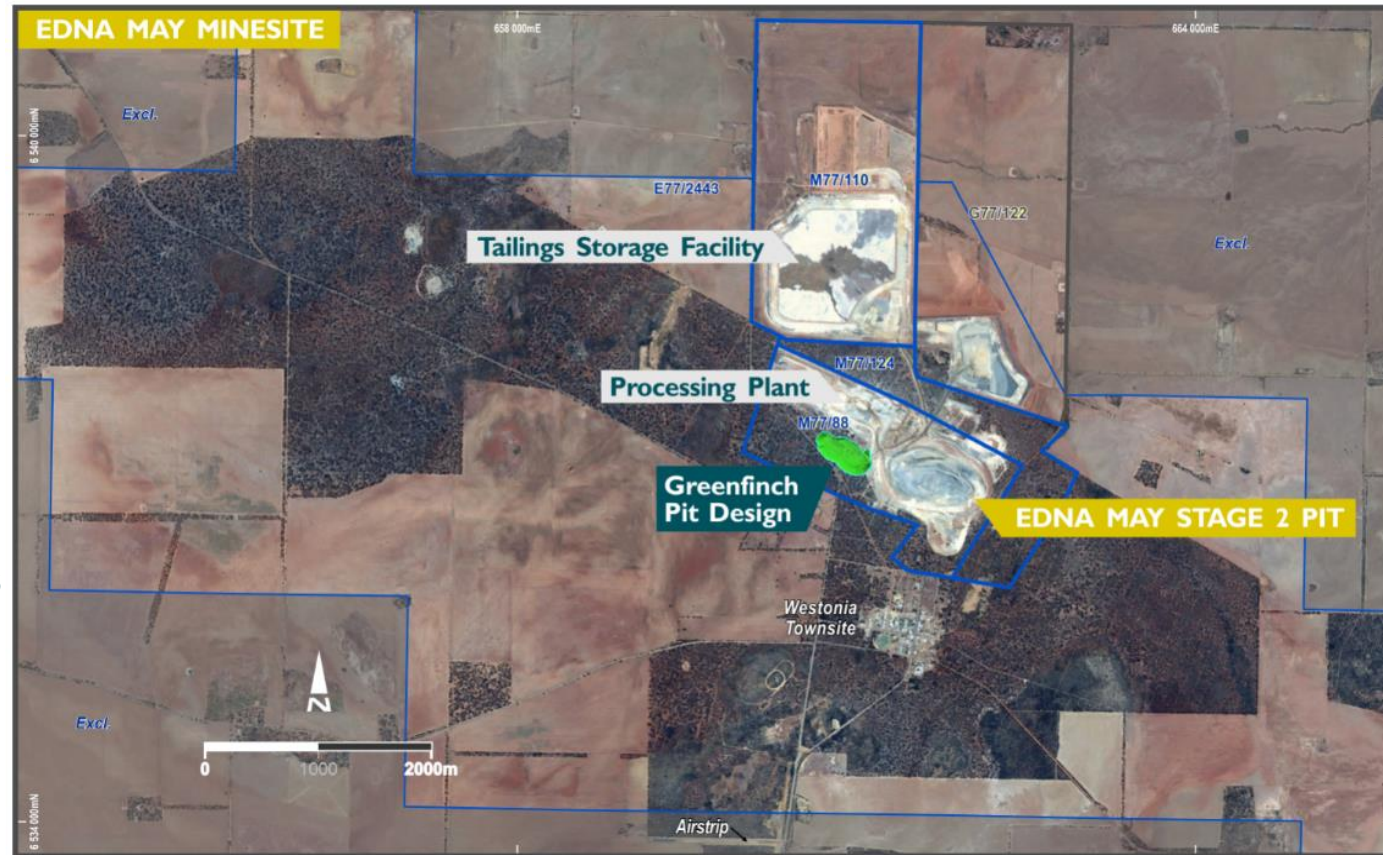
# EDNA MAY – STAGE 2 & GREENFINCH OPEN PITS

## STAGE 2 OPEN PIT

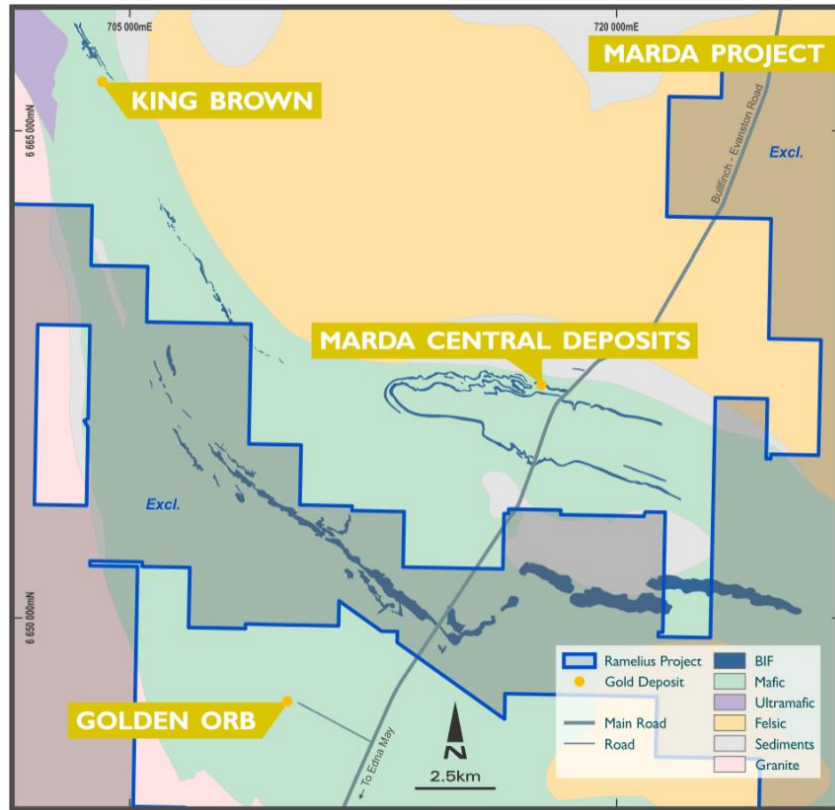
- Mining completed October 2018
- Plant full using surface stockpiles

## GREENFINCH OPEN PIT (in green)

- Ore Reserve
  - 1.7Mt @ 1.2 g/t Au for 62,000oz
- EPA “not to assess” April 2018
- Mining Proposal approved July 2018
- Clearing Permit submitted May 2018
  - Environment Minister rejected proposal (48.8ha) on 13 May 2019
  - Ramelius invited to submit revised proposal (26.3ha) for formal assessment
  - Estimated delay of up to 6 months



# MARDA GOLD PROJECT – SETTING UP FOR COMMENCEMENT



- Located ~200km north-east from Edna May
- Fits well with Ramelius' ore haulage based business model
- Infill drilling completed with excellent results\* including;
  - 12m at 2.72 g/t Au from 17m in MARC0014 - Goldstream
  - 30m at 2.66 g/t Au from 40m in MARC0017 - Python
  - 53m at 1.28 g/t Au from 17m in MARC0023 - Dolly Pot
  - 26m at 6.27 g/t Au from 30m in GORC0094 - Golden Orb
  - 37m at 8.07 g/t Au from 11m in KBRC0086 - King Brown
- JORC 2012 Resources & Reserves reporting imminent
- Initial production estimate for FY20 incorporates production from Marda, with ore to be hauled to Edna May
- Numerous drill-ready exploration targets





# TAMPIA HILL PROJECT (EXPLAURUM LTD TAKEOVER – ASX:EXU)

## Acquired via Cash & Scrip Off-Market Takeover Offer for Explaurum

- Compulsory acquisition notices sent 25<sup>th</sup> Feb 2019

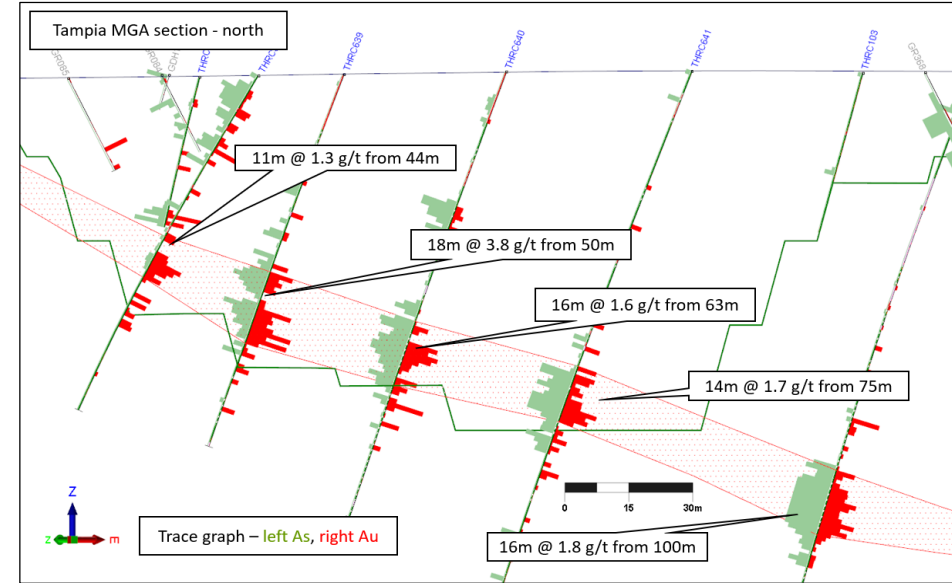
## Located ~140km by road from Edna May

## Ramelius completing Strategic Review of Tampia Hill Project;

- On-site processing facility at Tampia Hill, or
- Mine-only with ore haulage to Edna May

## Infill drilling\* carried out on Tampia recently by RMS including;

- 12m at 3.77 g/t Au from 64m in THRC634
- 18m at 3.79 g/t Au from 50m in THRC639
- 12m at 2.49 g/t Au from 22m in THRC643
- 28m at 1.87 g/t Au from 53m in THRC663
- 10m at 35.9 g/t Au from 40m in THRC665
- 16m at 21.1 g/t Au from 114m in THRC671

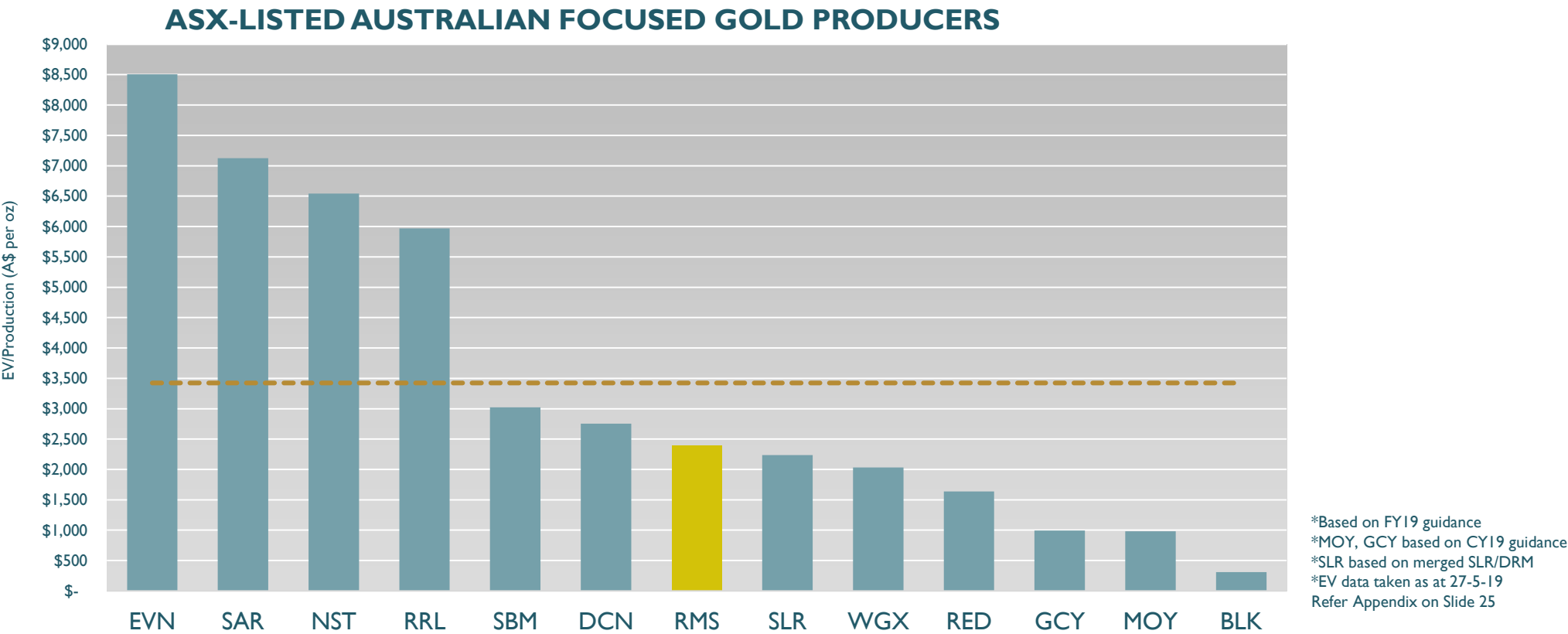


## Acquisition Metrics

- Total cost of A\$64M;
- 127M RMS shares (42.5 cps at c.o.c.)
- A\$10M in cash



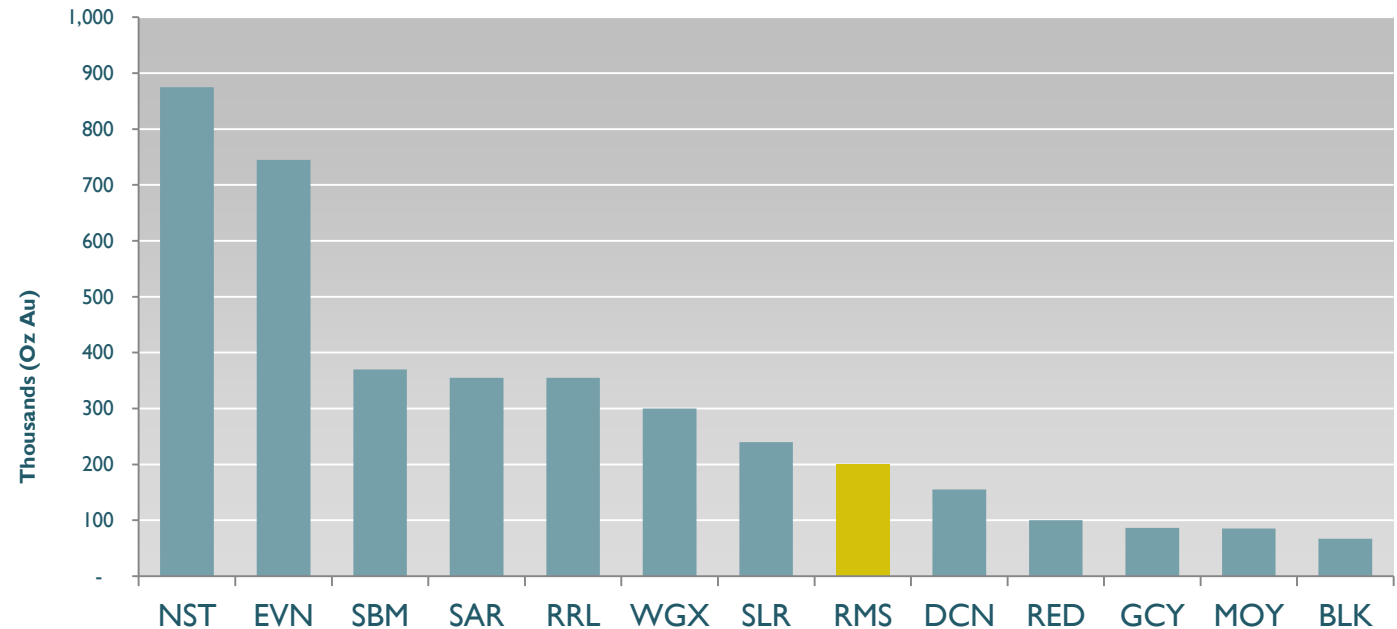
# INEXPENSIVE RELATIVE TO PEERS



## GROWTH STRATEGY IN ACTION

- Established 200koz p.a producer
- Favourable jurisdiction
- Strategic processing assets
- Strong balance sheet
- Added to S&P/ASX-300
- Excellent management team
- Proven operating track record
- ◆ Delivering on growth!

FY19 PEER PRODUCTION GUIDANCE



Refer Appendix on Slide 25

## 2019 KEY FOCUS AREAS

### Step Change in Reserve Position

- A\$20M exploration program plus recent acquisitions build on 700koz Ore Reserve with a target of 1Moz in sight
- Strong focus on value accretive acquisitions

### Operational Excellence

- 21 of last 23 Quarters meeting production Guidance
- Increasing cash reserves from profitable operations

### Organisational Capability

- Revised corporate structure to improve efficiency & cater for growth
- Moved Registered office from Adelaide to Perth, consolidated resources

### Capital Management

- Managed forward gold sales position (204koz @ A\$1,800/oz across 2 yrs)
- Disciplined approach to capital management & new Dividend Policy

# MINERAL RESOURCE STATEMENT

MINERAL RESOURCES AS AT 30 JUNE 2018 - INCLUSIVE OF RESERVES													
Project	Deposit	Measured			Indicated			Inferred			Total Resource		
		Tonnes kt	Au g/t	Au oz	Tonnes kt	Au g/t	Au oz	Tonnes kt	Au g/t	Au oz	Tonnes kt	Au g/t	Au oz
Mt Magnet	Galaxy Group	92	1.8	5,000	4,279	1.4	193,000	2,316	1.2	93,000	6,687	1.3	291,000
	Moming Star				4,866	1.9	301,000	4,322	1.5	205,000	9,188	1.7	506,000
	Bartus Group	49	2.2	4,000	115	2.1	8,000	238	1.6	12,000	402	1.8	24,000
	Boomer				1,194	1.8	68,000	786	1.0	26,000	1,980	1.5	94,000
	Britannia Well				179	2.0	12,000				179	2.0	12,000
	Bullocks				202	3.3	21,000	40	2.5	3,000	242	3.2	24,000
	Eastern Jaspilite	146	2.2	10,000	121	2.8	11,000	134	2.5	11,000	401	2.4	32,000
	Eclipse				167	2.2	12,000	41	2.1	3,000	208	2.1	15,000
	Eridanus				2,840	1.3	123,000	690	1.1	23,000	3,530	1.3	146,000
	Golden Stream				154	2.9	14,000	7	1.7	-	160	2.8	14,000
	Lone Pine	199	2.5	16,000	277	1.7	15,000	147	1.7	8,000	623	1.9	39,000
	Milky Way				2,590	1.2	102,000	1,630	1.1	58,000	4,220	1.2	160,000
	O'Meara Group				231	2.5	18,000	151	1.5	7,000	383	2.1	25,000
	Speamont - Galtee				25	2.9	2,000	207	4.3	28,000	232	4.1	30,000
	Stellar				580	1.5	27,000	150	1.6	8,000	730	1.5	35,000
	Stellar West				290	1.6	14,000	120	1.0	4,000	410	1.4	18,000
	Welcome - Baxter	222	1.6	11,000	276	1.6	15,000	198	1.8	11,000	696	1.7	37,000
	Open Pit deposits	707	2.0	46,000	18,386	1.6	956,000	11,177	1.4	500,000	30,271	1.5	1,502,000
	Hill 50 Deeps	279	5.5	49,000	932	7.0	209,000	396	6.4	81,000	1,607	6.6	339,000
	Hill 60 UG				200	4.4	28,000	160	4.3	22,000	360	4.3	50,000
Moming Star Deeps				195	4.2	26,000	334	5.0	53,000	528	4.7	79,000	
Saturn UG							1,607	2.5	127,000	1,607	2.5	127,000	
Shannon UG				480	5.0	77,000	288	4.2	39,000	768	4.7	116,000	
Water Tank Hill UG				71	6.8	16,000	71	4.4	10,000	142	5.6	26,000	
UG deposits	279	5.5	49,000	1,877	5.9	356,000	2,855	3.6	332,000	5,012	4.6	737,000	
ROM & LG stocks	383	0.9	11,000							383	0.9	11,000	
	Total Mt Magnet	1,370	2.4	106,000	20,264	2.0	1,312,000	14,032	1.8	832,000	35,666	2.0	2,250,000
Vivien	Vivien UG	477	6.4	97,000	80	6.0	16,000	117	3.7	14,000	674	5.9	127,000
Edna May	Edna May				20,900	1.0	657,000	5,100	0.8	136,000	26,100	0.9	794,000
	Greenfinch				2,700	1.1	94,000	1,700	1.1	60,000	4,300	1.1	154,000
	ROM & LG stocks	2,758	0.6	53,000							2,758	0.6	53,000
	Total Edna May	2,758	0.6	53,000	23,600	1.0	751,000	6,800	0.9	196,000	33,158	0.9	1,001,000
Kathleen Valley	Mossbecker				107	2.6	9,000	122	3.4	13,000	230	3.0	22,000
	Yellow Aster				91	3.8	11,000	300	2.0	19,000	391	2.4	30,000
	Nil Desperandum				23	5.8	4,000	101	2.9	10,000	125	3.5	14,000
	Total KV				222	3.4	24,000	523	2.5	42,000	745	2.8	66,000
Coogee	Coogee				31	3.6	4,000	65	3.3	7,000	96	3.4	11,000
Western Queen	WQ South				104	3.6	12,000	81	3.4	9,000	185	3.5	21,000
TOTAL RESOURCES		Mt	g/t	koz	Mt	g/t	koz	Mt	g/t	koz	Mt	g/t	koz
		4.6	1.7	256	44.3	1.5	2,119	21.6	1.6	1,100	70.5	1.5	3,476

Note: Figures rounded to kt, 0.1 g/t and 1,000 oz. Total rounded to Mt and koz. Rounding errors may occur.

For detailed information relating to Mineral Resources see ASX Release (RMS) 18 Sept 2018, 'Resources and Reserves Statement 2018'.

The Company confirms that it is not aware of any new information or data that materially affects the information included in this presentation and that all material assumptions and technical parameters underpinning the estimates continue to apply and have not materially changed.





# ORE RESERVE STATEMENT

ORE RESERVE STATEMENT AS AT 30 JUNE 2018										
Project	Mine	Proven			Probable			Total Reserve		
		Tonnes kt	Au g/t	Au oz	Tonnes kt	Au g/t	Au oz	Tonnes kt	Au g/t	Au oz
Mt Magnet	Boomer				132	2.9	12,000	132	2.9	12,000
	Brown Hill				623	1.6	31,000	623	1.6	31,000
	Eridanus				2,148	1.2	85,000	2,148	1.2	85,000
	Golden Stream				95	3.0	9,000	95	3.0	9,000
	Lone Pine				246	1.8	14,000	246	1.8	14,000
	Milky Way				1,320	1.3	56,000	1,320	1.3	56,000
	Morning Star				1,099	1.9	68,000	1,099	1.9	68,000
	O'Meara				50	3.3	5,000	50	3.3	5,000
	Shannon				143	2.7	12,000	143	2.7	12,000
	Stellar				330	1.5	16,000	330	1.5	16,000
	Stellar West				90	2.4	7,000	90	2.4	7,000
	Vegas				192	1.4	8,000	192	1.4	8,000
	Total Open Pit				6,469	1.6	323,000	6,469	1.6	323,000
	Hill 60				209	3.5	24,000	209	3.5	24,000
Shannon				324	5.2	54,000	324	5.2	54,000	
Water Tank Hill				85	3.4	9,000	85	3.4	9,000	
	Total Underground				618	4.4	87,000	618	4.4	87,000
	ROM & LG stocks	383	0.9	11,000				383	0.9	11,000
	Mt Magnet Total	383	0.9	11,000	7,086	1.8	410,000	7,470	1.8	421,000
Vivien	Vivien UG	331	6.7	71,000	38	4.8	6,000	370	6.5	77,000
Edna May	Edna May Stage 2	640	1.1	22,000	60	1.1	2,000	700	1.1	24,000
	Edna May UG				398	4.8	61,000	398	4.8	61,000
	Greenfinch				1,652	1.2	62,000	1,652	1.2	62,000
	ROM & LG stocks	2,758	0.6	53,000				2,758	0.6	53,000
	Edna May Total	3,398	0.7	75,000	2,111	1.8	125,000	5,509	1.1	200,000
TOTAL RESERVES		Mt	g/t	koz	Mt	g/t	koz	Mt	g/t	koz
		4.1	1.2	157	9.2	1.8	541	13.3	1.6	698

Note: Figures rounded to kt, 0.1 g/t and 1,000 oz. Total rounded to Mt and koz. Rounding errors may occur.

For detailed information relating to Ore Reserves see ASX Release (RMS) 18 Sept 2018, 'Resources and Reserves Statement 2018'.

The Company confirms that it is not aware of any new information or data that materially affects the information included in this presentation and that all material assumptions and technical parameters underpinning the estimates continue to apply and have not materially changed.

## APPENDIX: PEER DATA SOURCES

### Peer EV/Production & Guidance Charts - Production guidance data sourced from the following announcements

Company	Release Date	Announcement	Comment
Northern Star Resources	1/05/2019	Investor Presentation - Macquarie Australia Conference	
Evolution Mining	14/05/2019	BAML Metals and Mining Conference Presentation	
St Barbara	15/05/2019	Presentation on Atlantic Gold acquisition and equity raising	Gwalia & Simberi only
Saracen Mineral Holdings	29/04/2019	Corporate Presentation - May 2019	
Regis Resources	1/05/2019	Presentation to Macquarie Securities Conference	
Westgold Resources	9/05/2019	Investor Presentation - May 2019	
Silver Lake Resources	14/11/2018	Silver Lake and Doray Merger Presentation	Calculated on post merger basis with Doray Minerals
Dacian Gold	28/04/2019	Quarterly Activities and Cash Flow Report	
Red 5	5/05/2019	Investor Presentation	
Millennium Minerals	24/05/2019	AGM Presentation	CY19 guidance
Gascoyne Resources	28/03/2019	Equity Raising Presentation	CY19 guidance
Blackham Resources	30/04/2019	Quarterly Activities & Cash Flow Report March 2019	