



# Ramelius Resources Limited ASX:RMS

Investor Presentation June 2014



# Forward Looking and Competent Persons Statements:

---

## Forward looking statements

This presentation contains certain forward looking statements with respect to Ramelius' financial condition, results of operations, production targets and other matters that are subject to various risks and uncertainties. Actual results, performance or achievements could be significantly different from those expressed in or implied by those forward looking statements. Such forward looking statements are not guarantees of future performance and involve known and unknown risks, uncertainties and other factors that are beyond the control of Ramelius that may cause actual results to differ materially from those expressed in the forward looking statements contained herein. Ramelius Resources Limited gives no warranties in relation to the information and statements within this presentation.

## Competent persons statement

The Information in this report that relates to Exploration Results, Mineral Resources and Ore Reserves is based on information compiled by Kevin Seymour (Exploration Results), Rob Hutchison (Mineral Resources) and Mark Zeptner (Ore Reserves), who are Competent Persons and Members of The Australasian Institute of Mining and Metallurgy. Kevin Seymour, Rob Hutchison and Mark Zeptner are full-time employees of the company. Kevin Seymour, Rob Hutchison and Mark Zeptner have sufficient experience that is relevant to the style of mineralisation and type of deposit under consideration and to the activity being undertaken to qualify as a Competent Person as defined in the 2012 Edition of the "Australasian Code for Reporting of Exploration Results, Mineral Resources and Ore Reserves". Kevin Seymour, Rob Hutchison and Mark Zeptner consent to the inclusion in this report of the matters based on their information in the form and context in which it appears.

## Production targets

Production targets presented for Vivien and Kathleen Valley projects contain Inferred Resources. For details covering the resource and reserve classifications and proportions relating to the production targets refer to slide 23. Further evaluation work and appropriate studies are required to establish sufficient confidence that this target will be met.



# Ramelius Corporate:

## Corporate details:

- ASX Code: **RMS**
- Ordinary shares on issue: **365m**
- Market capitalisation: **~A\$40m**
- 6 month share price range: **\$0.10-0.38**
- Cash on and gold on hand: **A\$23m (May 14)**

## Share price and gold index (6 month):



## Significant shareholders April 14:

Sprott: **12.7%**

Dimensional: **2.6%**

Robert Kennedy **2.2%**

## Directors:

Chairman:

**Robert Kennedy**



Managing Director:

**Ian Gordon**



Non Executive Director:

**Kevin Lines**



Non Executive Director:

**Mike Bohm**

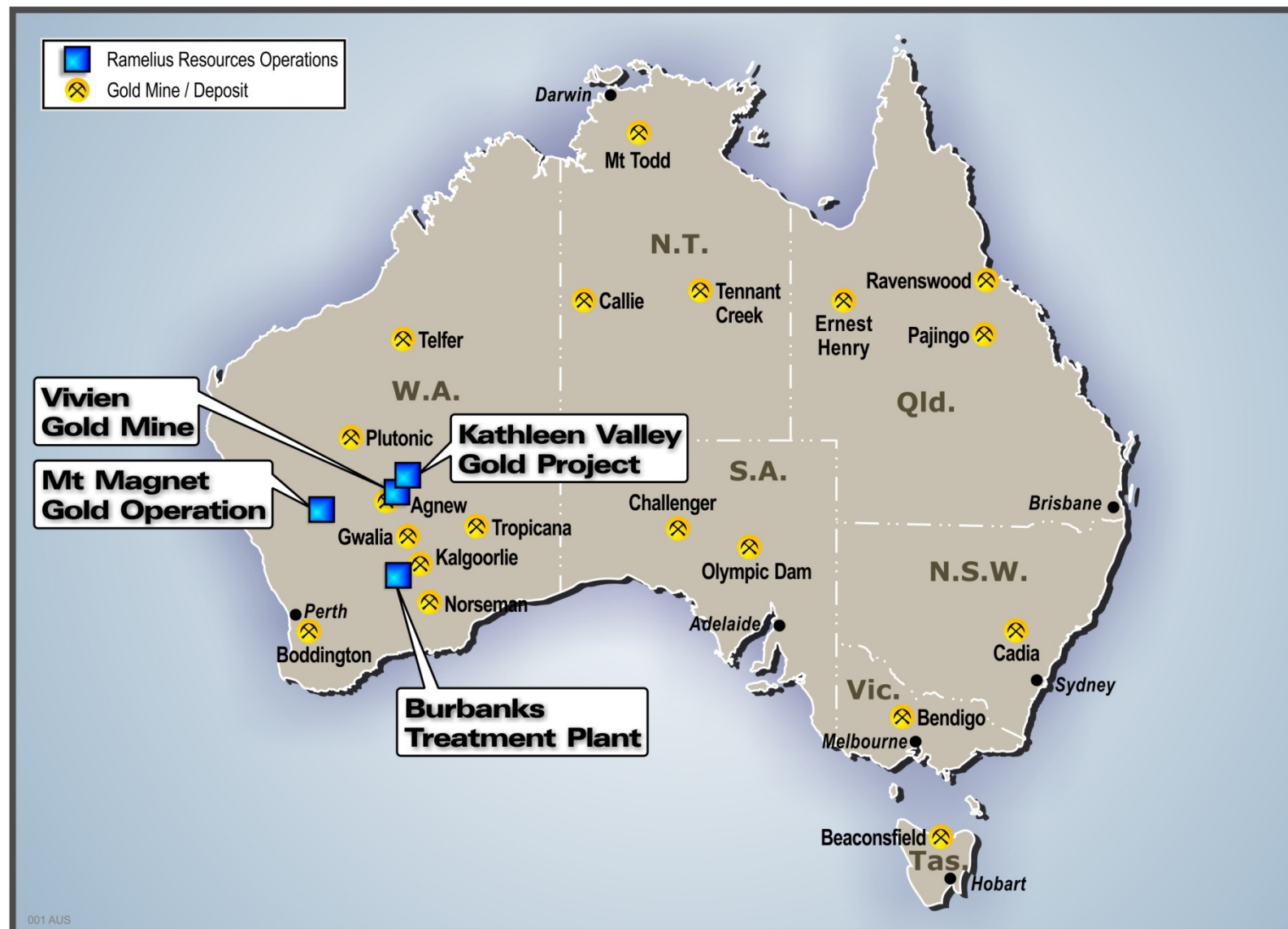


# Strategy:

---

- **Deliver profitable production in any gold price environment**
  - 2014-15 mine plan of 78,000oz at total production cost of A\$1,260
  - Focus on higher value developments going forward
  - Development of the high grade Vivien & Kathleen Valley projects
- **Discovery of a high margin asset within 2 years**
  - Focus on high grade / low cost gold opportunities in Australia
  - Looking for high grade incremental opportunities at Mt Magnet
- **Focus on capital management**
  - Maintain a robust cash balance throughout the development cycle
  - Return surplus funds to shareholders when cash flow allows

# Australian Project Locations:



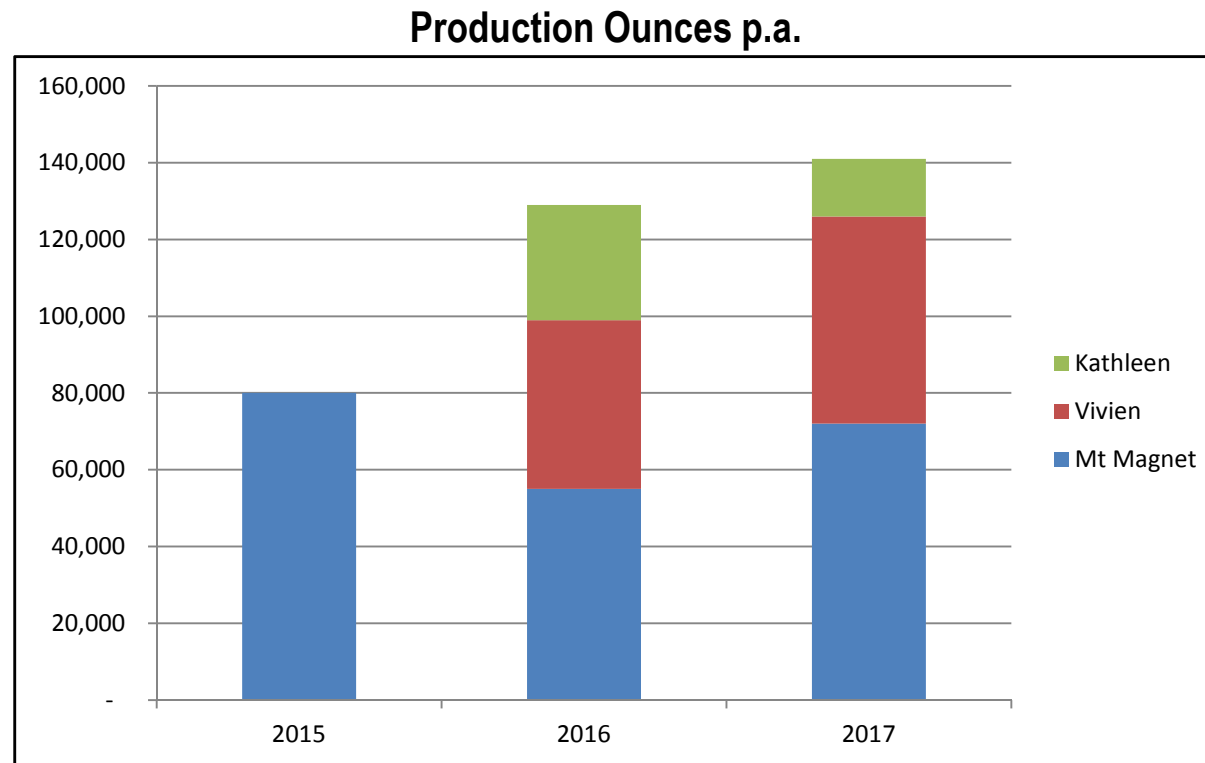
# Project overview:

---

- **Mt Magnet – at full production**
  - Mine plan 2014-15 (78,000oz at total av. production cost of A\$1,260)
  - Grades now in line with resource model (+1.75 g/t)
  - Processing Facility to be used for Vivien & Kathleen Valley production
- **Vivien Project – potential future high grade operation**
  - Feasibility Study completed – planning development Sept Qtr 2014
  - +100,000 ounces of high grade ounces and open at depth
  - Vivien Gem adds potential high grade discovery
- **Kathleen Valley Project – high grade resource**
  - Potential high grade open pit near Vivien

# Production Targets<sup>1</sup>:

- Clear plan for production FY2017 with increasing grade
- Mt Magnet production hub with high grade projects at Vivien / Kathleen
- Development of Vivien increases total production to 140,000 oz pa



<sup>1</sup> Vivien and Kathleen Valley Production targets contain Inferred Resources. Refer slide 23 for further details



# Mt Magnet Project:



Saturn Pit

- Operations in 2014/15 focus on Saturn and Mars open pits
- Production of 78,000 oz<sup>2</sup> of gold at an all-in cost of A\$1,260 / oz



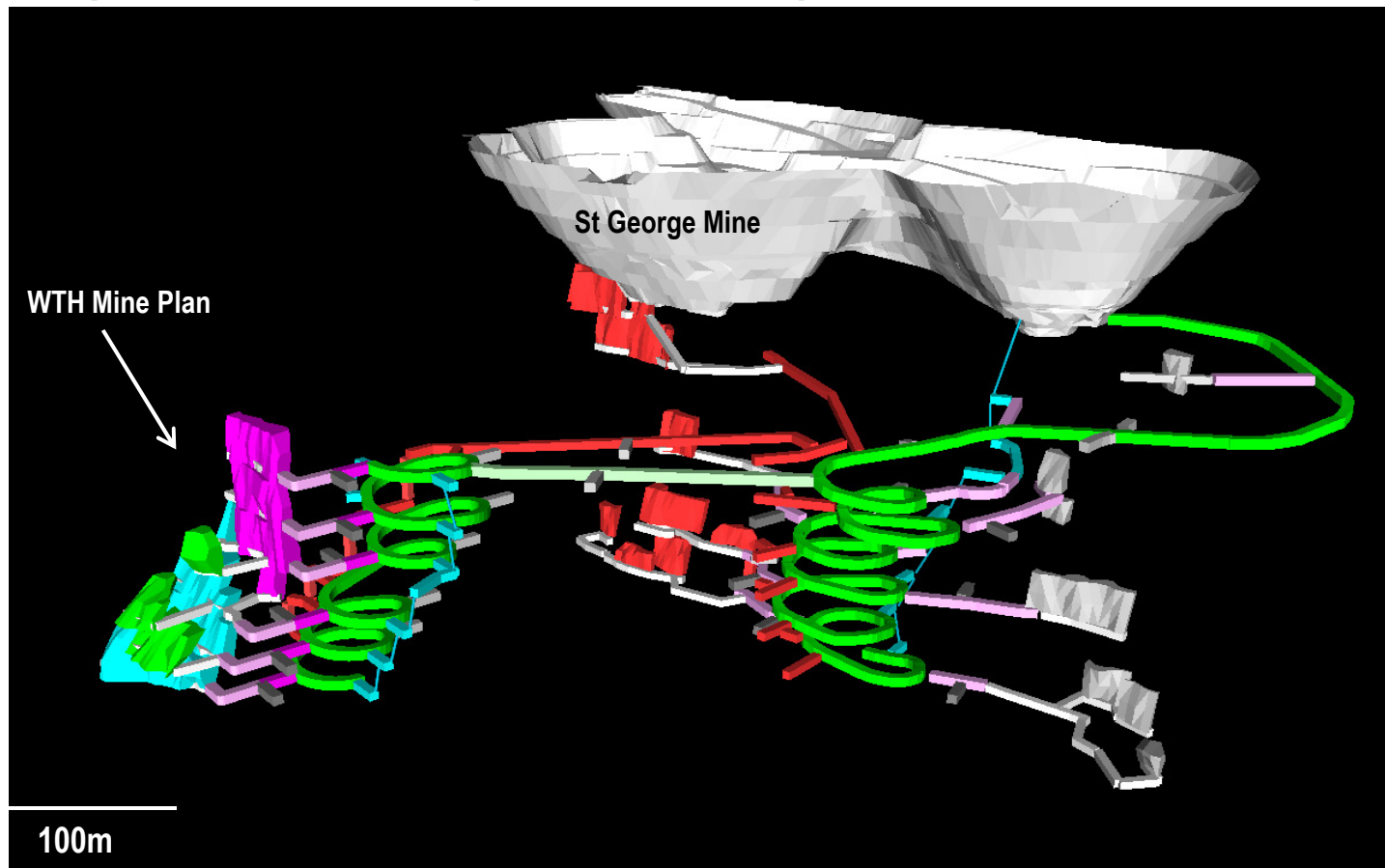
# Mt Magnet Project:



- 1.7mtpa processing plant readily expandable to 2.4mtpa
- Pipeline of open pit and underground mines with increasing grade:
  - Saturn, Mars, Titan, Perseverance & satellite open pits
  - Underground mines at Water Tank Hill / St George / Saturn
- Proposed to deliver Vivien / Kathleen ore for treatment at Mt Magnet

# Mt Magnet – Water Tank Hill / St George:

- Potential medium term high grade underground production
- Combined Mineral Resource of 105,000 oz at 5.2 g/t Au<sup>2</sup> near existing decline
- Reserve of 60,000 oz<sup>2</sup> at an all-in cost of A\$1,185 per /oz (includes up front capital)
- Proposed to be developed after Vivien production commences



# Vivien Project (WA) – high grade development:

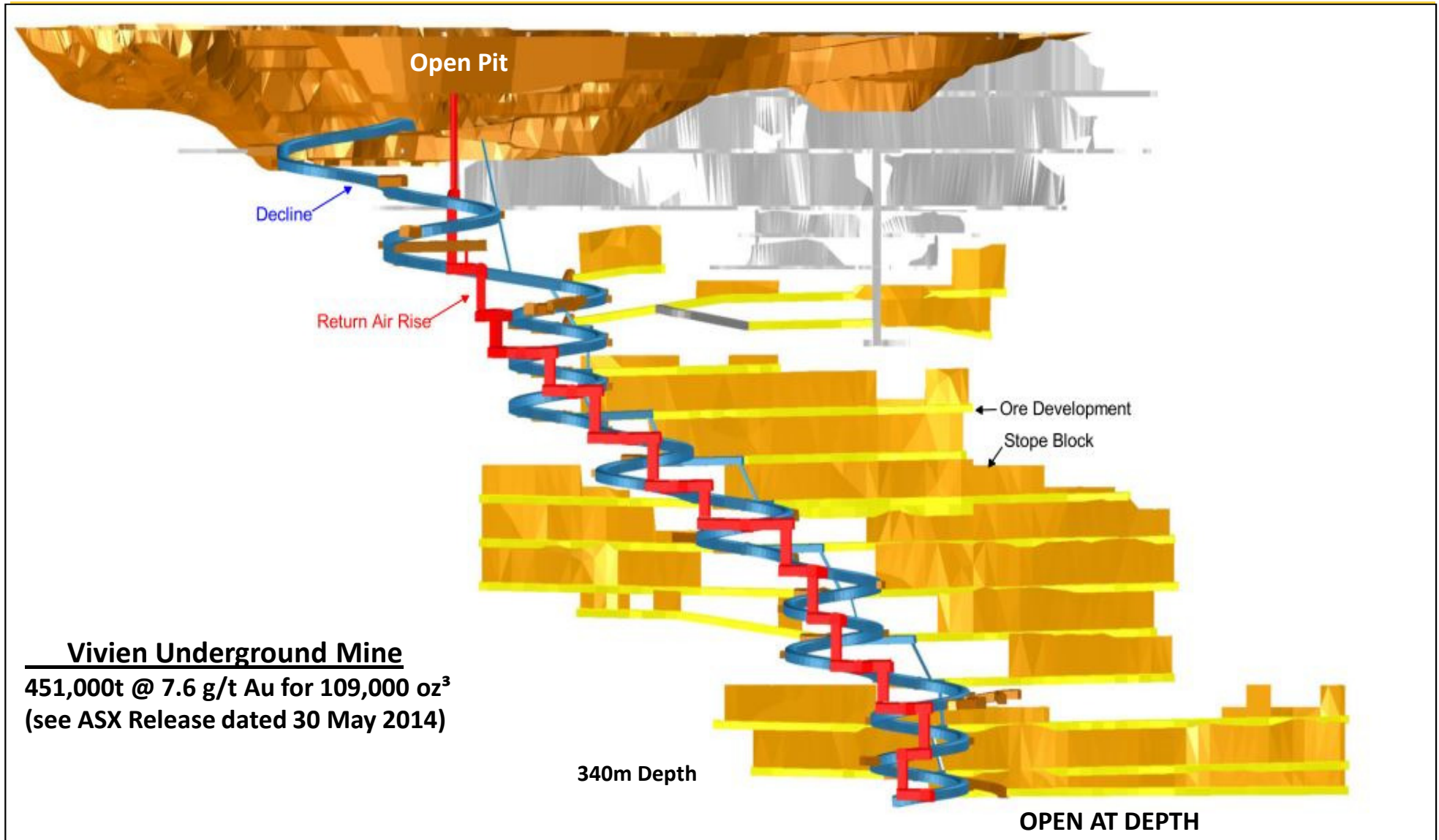
---

- Acquisition from Gold Fields (settlement in June 2014)
- Initial underground production of 109,000 oz<sup>3</sup> of gold over 2 years
- First ore production expected in the June quarter 2015
- Ore to be trucked to Mt Magnet for treatment commencing in FY2016
- All-in cost of A\$1,085 per ounce (including up front capital of A\$20m)
- Operating cost of A\$890 per ounce (including sustaining capital)
- Open at depth with further drilling to be completed from underground
- Commencement of development is planned for late July 2014

<sup>3</sup> Vivien Production targets contain some Inferred Resources. Refer slide 23 for further details



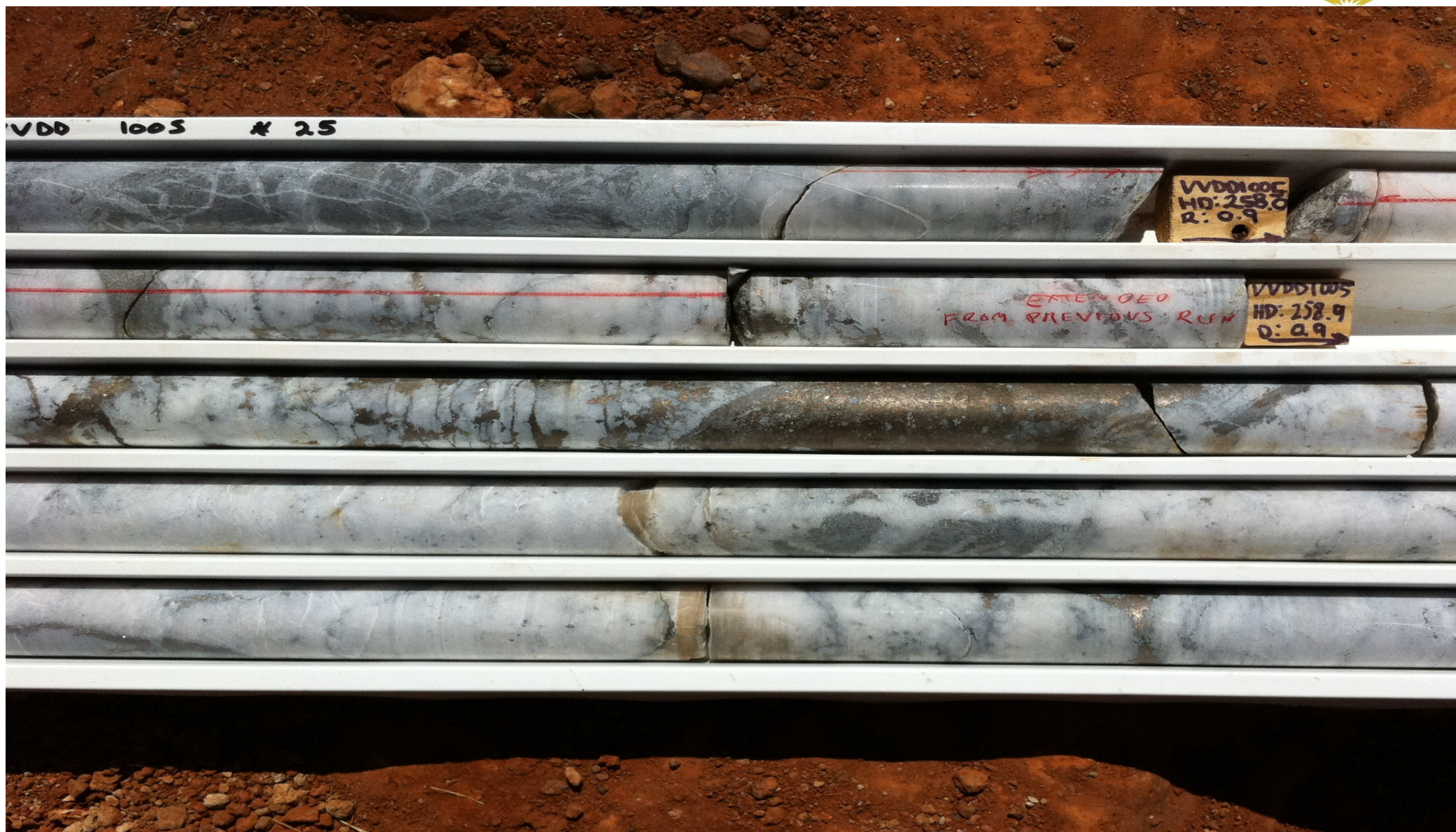
# Vivien Project (WA) – high grade development:





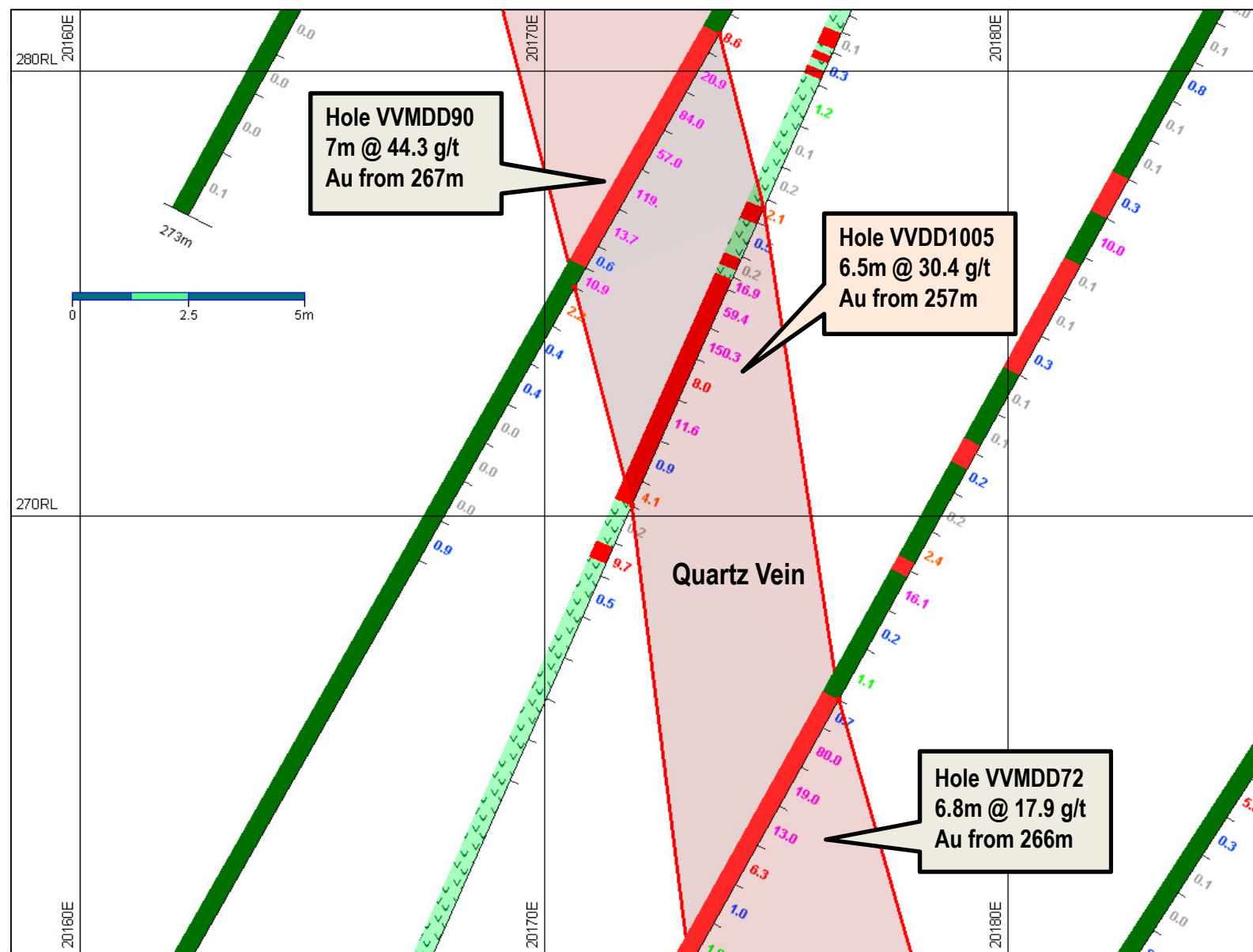
# Vivien Project (WA) – high grade drill results:

- 2013 Drill Hole VVDD1005 – 6.5m @ 30.4 g/t Au from 257m downhole





# Vivien Project (WA) – high grade drill results:

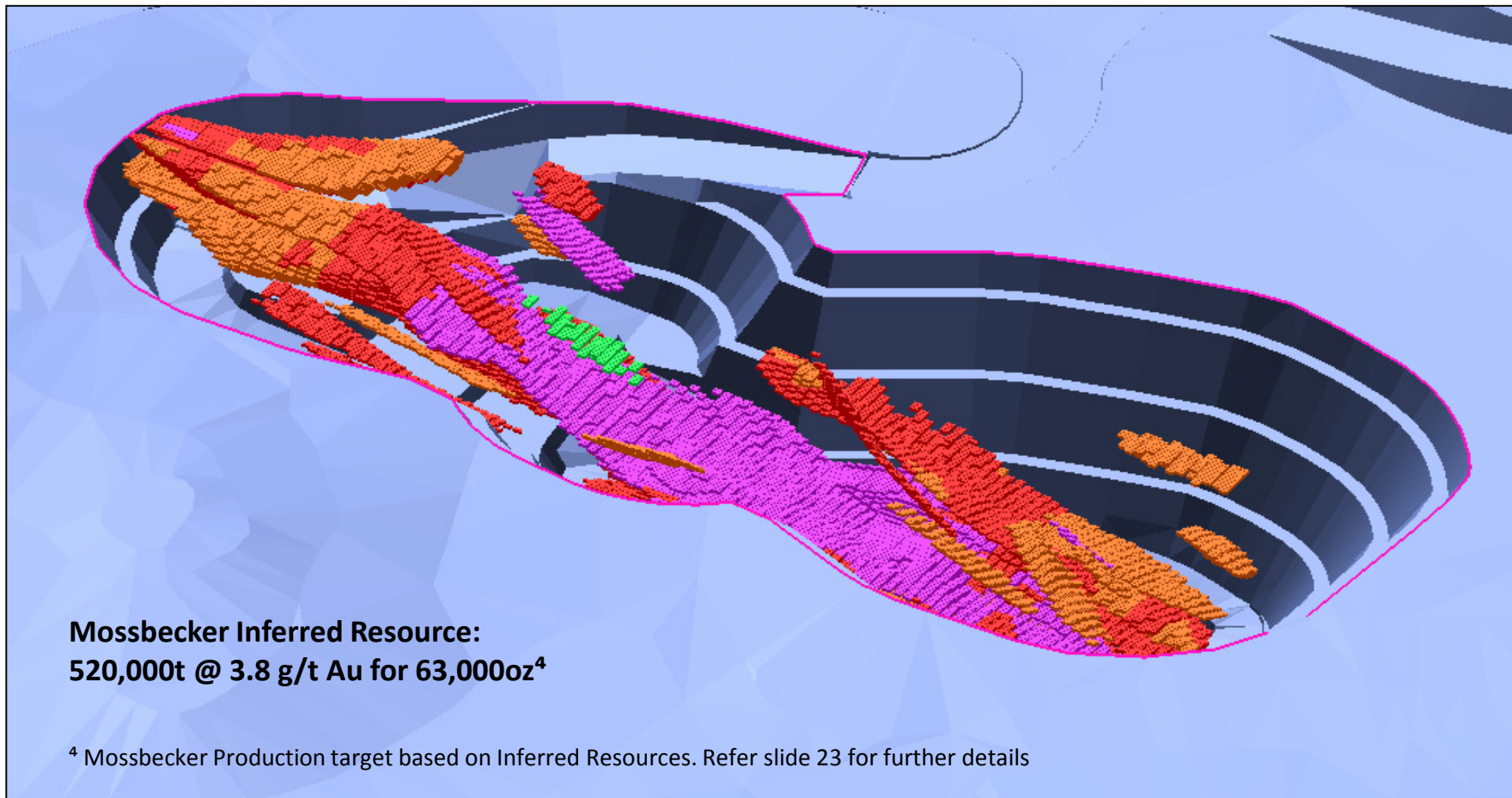


Section at 10450N local grid (no top cut applied, downhole intercept lengths)



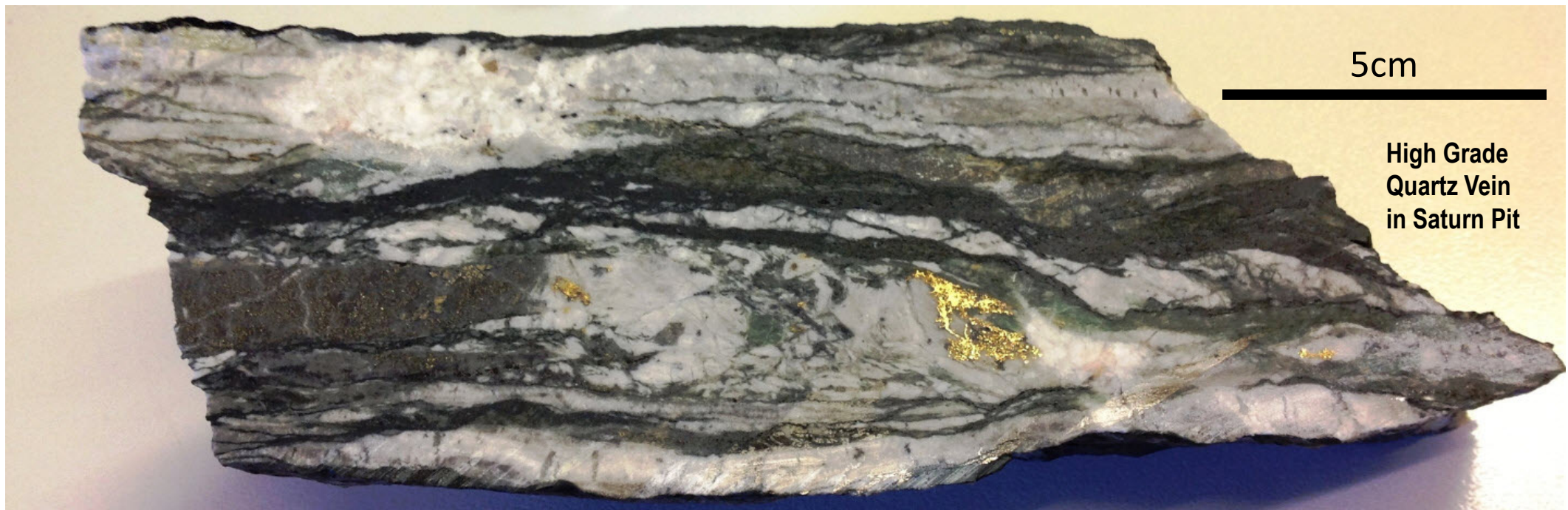
# Kathleen Valley Project (WA):

- Mossbecker Resource – high grade near term mining opportunity
- Mining studies indicate potential to mine 48,000 ozs<sup>4</sup> over 15 months



# Exploration – new opportunities:

- Targeting discovery of incremental high grade ore at Mt Magnet
- Drilling at Vivien, Tanami and at Fraser Range projects
- Looking at new grass roots exploration opportunities

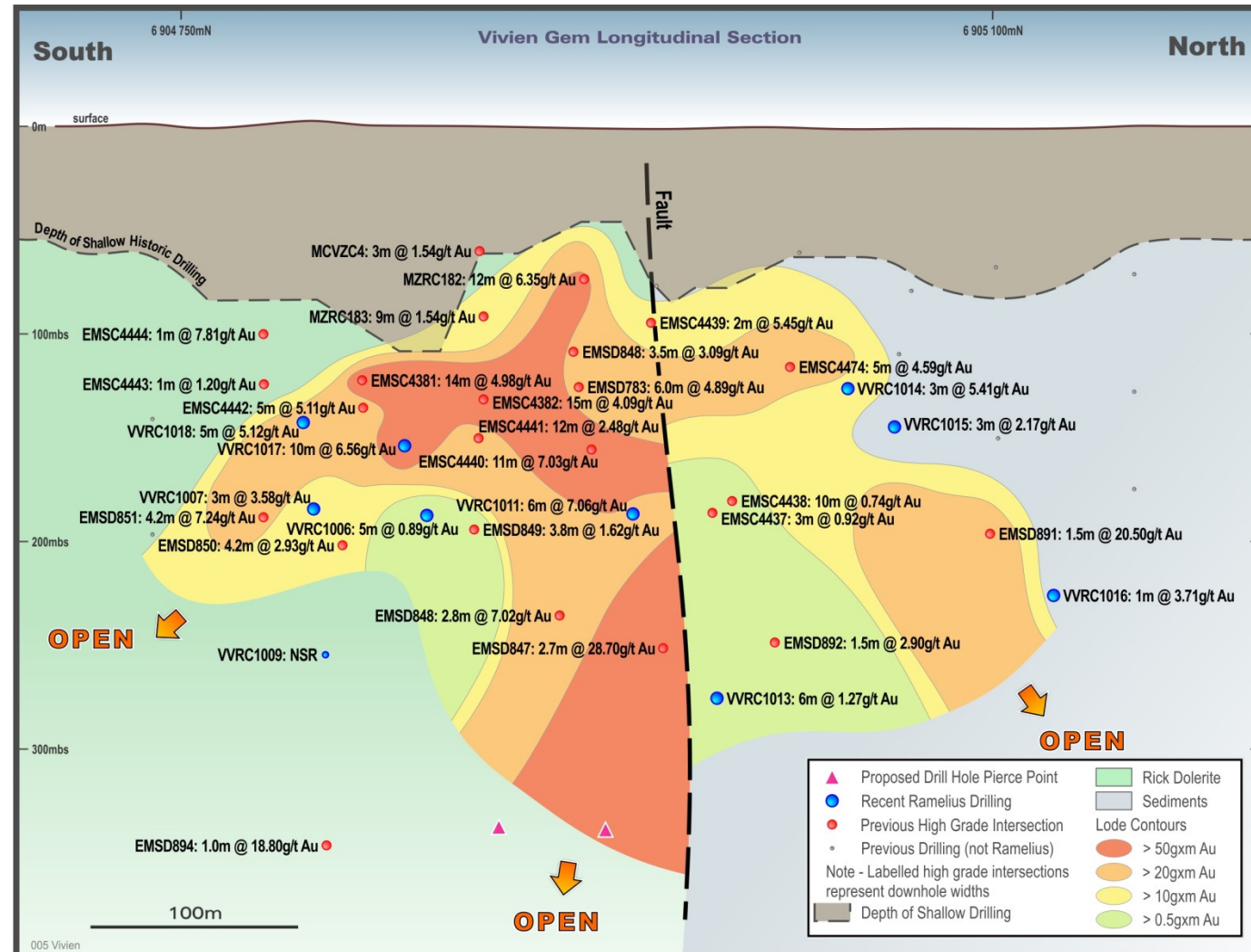




# Exploration – Vivien Gem:



- Very encouraging shallow high grade intersections reported from RMS drilling:
  - 10m @ 6.56 g/t Au
  - 6m @ 7.06 g/t Au
- Historical drilling incl.:
  - 2.7m @ 28.7 g/t Au
- Mineralisation remains open with depth

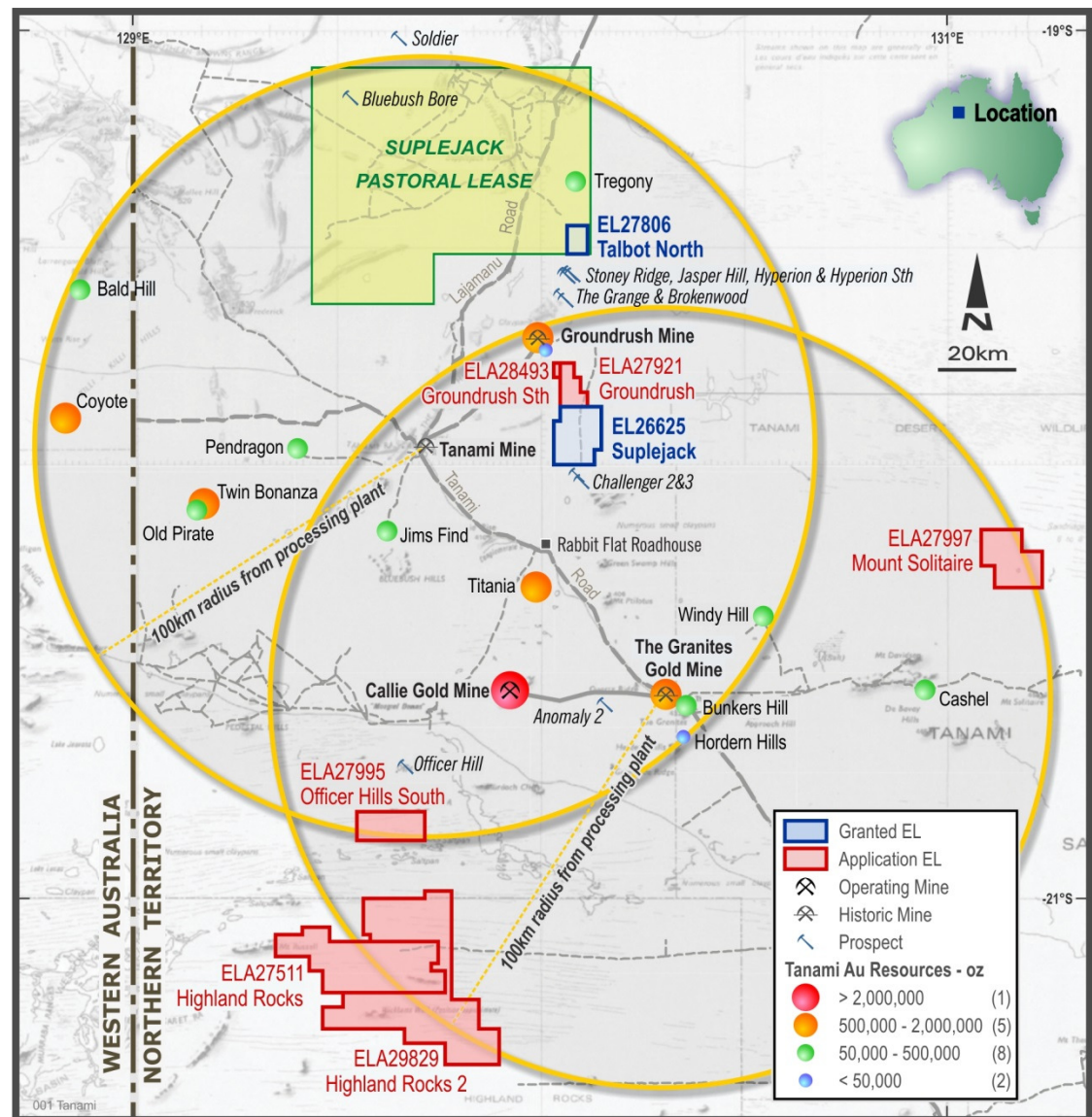




# Exploration – new greenfields opportunities NT:

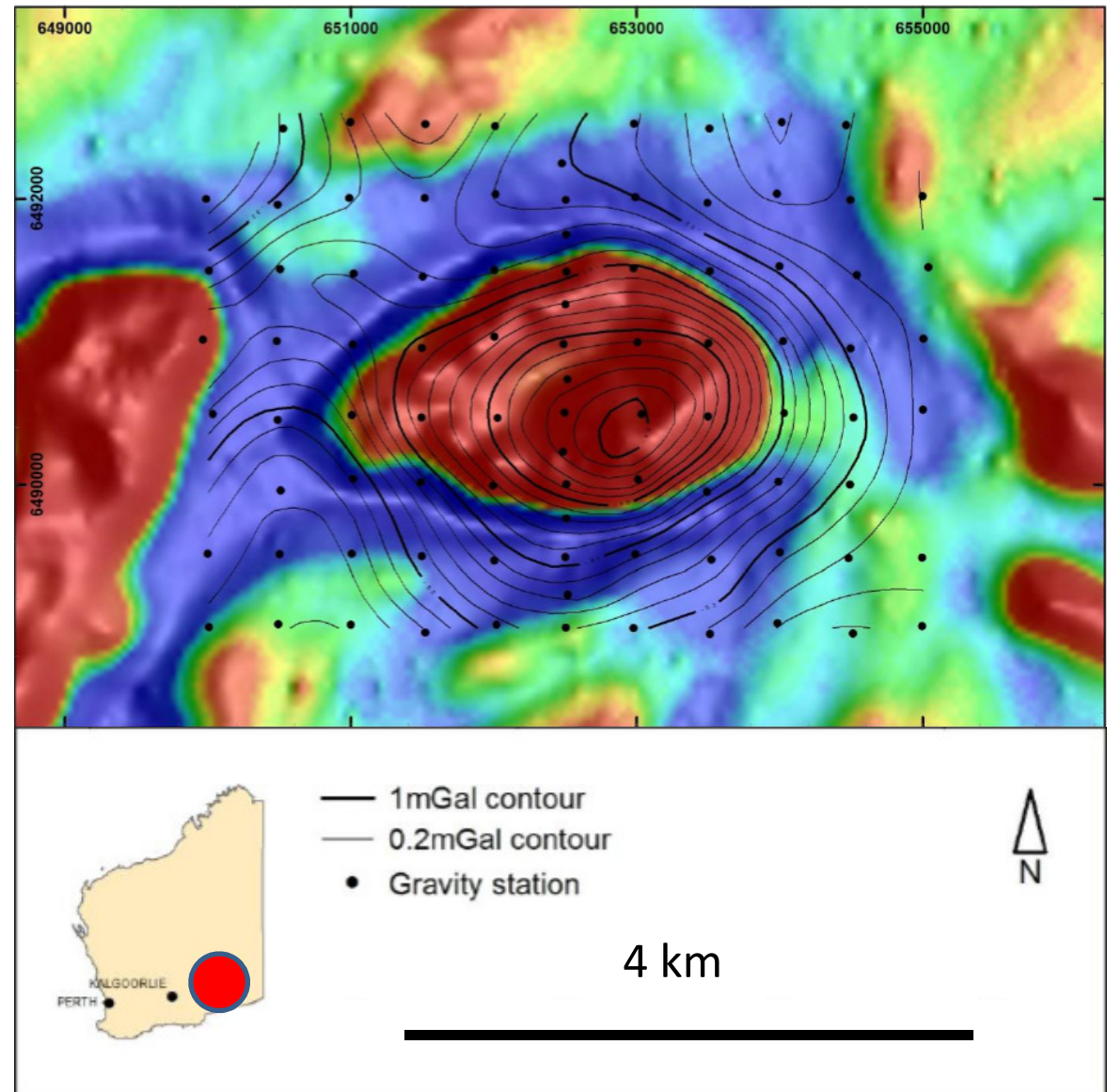


- Targeting new high grade discoveries within Tanami Complex
- Farm-in secured over 1,700km<sup>2</sup> of prospective geology
- Underexplored and within 100km of Newmont's 4.5Moz Callie Gold Mine and Granites Treatment Plant



# Exploration – Fraser Range WA:

- Targeting buried IOCG systems within Fraser Range Province
- New 24 sub-block application over coincident magnetic and gravity anomalies
- Proceeding to grant
- No previous drilling
- Drill ready target....



# Summary – investment case:

---

## Operations

- Mt Magnet – operating with capital spend completed
- Coogee – high grade feed to Burbanks plant
- Vivien / Kathleen – high grade development opportunity

## Upside Potential

- Mt Magnet is a large gold system with potential for new discoveries
- Vivien project is high grade and open down plunge
- Exploration – good targets in known mineral belts Tanami / Fraser Range

## Capital Position

- Strong cash balance of \$20m with \$10m debt repaid Jan-May 14
- Future cash flows enhanced by Vivien project



# Mineral Resource Statement:



MINERAL RESOURCES AS AT 30 JUNE 2013 - INCLUSIVE OF RESERVES												
Deposit	Measured			Indicated			Inferred			Total Resource		
	Tonnes ('000s)	Au g/t	Au Oz	Tonnes ('000s)	Au g/t	Au Oz	Tonnes ('000s)	Au g/t	Au Oz	Tonnes ('000s)	Au g/t	Au Oz
Galaxy	1,556	1.8	88,000	8,009	2.0	510,000	5,167	1.3	215,000	14,733	1.7	813,000
Morning Star				5,277	1.7	285,000	2,807	1.9	169,000	8,084	1.7	454,000
Total major deposits	1,556	1.8	88,000	13,286	1.9	795,000	7,974	1.5	384,000	22,817	1.7	1,267,000
Bartus Group	49	2.2	4,000	115	2.1	8,000	238	1.6	12,000	402	1.8	23,000
Boomer				1,115	1.7	60,000	158	1.9	10,000	1,274	1.7	69,000
Britannia Well				179	2.0	12,000				179	2.0	12,000
Bullocks				202	3.3	21,000	40	2.5	3,000	242	3.2	25,000
Eastern Jaspilite	146	2.2	10,000	121	2.8	11,000	134	2.5	11,000	401	2.4	32,000
Eclipse				167	2.2	12,000	41	2.1	3,000	208	2.1	14,000
Golden Stream				154	2.9	14,000	7	1.7	-	160	2.8	15,000
Hesperus	7	1.1		354	1.5	17,000	61	1.4	3,000	422	1.5	20,000
Hesperus West							170	1.8	10,000	170	1.8	10,000
Hill 60							309	4.6	46,000	309	4.6	46,000
Lone Pine	199	2.5	16,000	277	1.7	15,000	147	1.7	8,000	623	1.9	38,000
O'Meara Group				231	2.5	18,000	151	1.5	7,000	383	2.1	26,000
Shannon	94	2.5	8,000	35	2.5	3,000	42	2.6	3,000	170	2.5	14,000
Simmer And Jack							455	1.5	22,000	455	1.5	22,000
Souvenir Group	2	1.2		113	1.7	6,000	641	1.5	32,000	755	1.5	38,000
Spearmont - Galtee				25	2.9	2,000	207	4.3	28,000	232	4.1	31,000
Stellar	160	2.1	11,000	87	1.9	5,000	59	1.8	3,000	306	2.0	19,000
Welcome - Baxter	222	1.6	11,000	276	1.6	15,000	198	1.8	11,000	696	1.7	37,000
Total satellite deposits	878	2.1	60,000	3,451	2.0	219,000	3,058	2.2	212,000	7,387	2.1	491,000
Hill 50 Deeps	279	5.5	49,000	932	7.0	209,000	396	6.4	81,000	1,607	6.6	339,000
Morning Star Deeps				195	4.2	26,000	334	5.0	53,000	528	4.7	79,000
Saturn UG							1,607	2.5	127,000	1,607	2.5	127,000
St George UG	110	4.9	17,000	149	4.2	20,000	42	4.0	5,000	302	4.4	42,000
Water Tank Hill UG				229	6.6	49,000	89	4.9	14,000	318	6.1	63,000
Total UG deposits	390	5.3	66,000	1,504	6.3	304,000	2,468	3.5	280,000	4,362	4.6	650,000
Western Queen South				400	3.2	42,000	376	2.5	30,000	776	2.9	72,000
Mt Magnet Stockpiles	412	1.0	13,000	1,668	0.8	41,000	100	1.2	4,000	2,180	0.8	58,000
<b>Mt Magnet Total</b>	<b>3,236</b>	<b>2.2</b>	<b>227,000</b>	<b>20,309</b>	<b>2.1</b>	<b>1,401,000</b>	<b>13,975</b>	<b>2.0</b>	<b>910,000</b>	<b>37,521</b>	<b>2.1</b>	<b>2,538,000</b>
Coogee				165	4.7	25,000	65	3.3	7,000	231	4.3	32,000
<b>Total Resources</b>	<b>3,236</b>	<b>2.2</b>	<b>227,000</b>	<b>20,474</b>	<b>2.2</b>	<b>1,426,000</b>	<b>14,041</b>	<b>2.0</b>	<b>917,000</b>	<b>37,752</b>	<b>2.1</b>	<b>2,570,000</b>

For detailed information relating to Mt Magnet Mineral Resources see ASX release (RMS) 12 Sept 2013, 'Resources and Reserves Statement'. No material change has occurred.

# Ore Reserve Statement:



ORE RESERVE STATEMENT AS AT 30 JUNE 2013									
	Proven			Probable			Total Reserve		
	Tonnes ('000s)	Au g/t	Au Oz	Tonnes ('000s)	Au g/t	Au Oz	Tonnes ('000s)	Au g/t	Au Oz
<b>Galaxy Pits</b>									
Saturn	508	1.9	31,000	635	1.6	32,000	1,144	1.7	63,000
Mars	202	2.0	13,000	439	2.1	30,000	641	2.1	43,000
Titan	717	1.4	32,000	536	1.3	23,000	1,253	1.4	55,000
Perseverance				981	2.5	79,000	981	2.5	79,000
Vegas				64	1.2	2,000	64	1.2	2,000
Brown Hill				393	2.1	26,000	393	2.1	26,000
<b>Morning Star Cutback</b>									-
Morning Star				1,679	1.8	98,000	1,679	1.8	98,000
<b>Satellite Pits</b>									-
Boomer				583	1.6	30,000	583	1.6	30,000
Hesperus				352	1.1	12,000	352	1.1	12,000
Lone Pine				258	1.8	15,000	258	1.8	15,000
O'Meara				150	2.6	12,000	150	2.6	12,000
Welcome Baxter				191	1.1	7,000	191	1.1	7,000
Golden Stream				90	2.9	9,000	90	2.9	9,000
<b>Underground</b>									-
Water Tank Hill				269	5.1	44,000	269	5.1	44,000
St George	73	3.6	8,000	86	3.0	8,000	159	3.3	16,000
<b>Western Queen</b>									-
Western Queen South				182	3.9	23,000	182	3.9	23,000
<b>Stockpiles</b>	412	1.0	13,000	1,164	0.8	30,000	1,576	0.8	43,000
<b>Mt Magnet Total</b>	1,912	1.6	97,000	8,052	1.9	480,000	9,964	1.8	577,000
Coogee				109	5.1	18,000	109	5.1	18,000
<b>Total Reserves</b>	<b>1,912</b>	<b>1.6</b>	<b>97,000</b>	<b>8,161</b>	<b>1.9</b>	<b>498,000</b>	<b>10,073</b>	<b>1.8</b>	<b>595,000</b>

Note: Figures rounded to nearest 10,000 tonnes, 0.1g/t and 1,000 ounces. Rounding errors may occur.

For detailed information relating to Mt Magnet Ore Reserves see ASX release (RMS) 12 Sept 2013, 'Resources and Reserves Statement'. No material change has occurred.

# Production Targets, Mineral Resource and Ore Reserve Note



<sup>2</sup> All Mt Magnet Production targets are based on current Ore Reserves. For detailed information relating to Mt Magnet Mineral Resources and Ore Reserves see ASX release (RMS) 12 Sept 2013, 'Resources and Reserves Statement'.

<sup>3</sup> Vivien Production Target based on Ore Reserves plus a small proportion of Inferred Resource (7%). For detailed information relating to Vivien Mining Inventory and Ore Reserve see ASX release (RMS) 30 May 2014, 'Vivien Gold Mine Feasibility Completed'.

<sup>4</sup> Kathleen Valley Project, Mossbecker deposit production target is based on a mining scoping study based on 81% Inferred Resource. For detailed information relating to the Mineral Resource see ASX release (RMS) 10 June 2014, 'Kathleen Valley Gold Project Acquisition.' Further evaluation work and appropriate studies are required to establish sufficient confidence that this target will be met.

The Company confirms that it is not aware of any new information or data that materially affects the information included in this presentation and that all material assumptions and technical parameters underpinning the estimates continue to apply and have not materially changed.