

RAMELIUS RESOURCES LIMITED

ACN 001 717 540



140 Greenhill Road, Unley SA 5061
GPO Box 1373, Adelaide SA 5001
DX 52003, Unley
Telephone (08) 8373 6473 / (08) 8373 5588
Facsimile (08) 8373 5917

15 April 2008

General Manager
The Company Announcements Office
ASX Limited
PO Box H224
Australia Square
Sydney NSW 121

Dear Sir/Madam,

For Immediate Release

RAMELIUS RESOURCES LIMITED

ACN 001 717 540

**ASX RELEASE – RESULTS FROM VISIBLE GOLD
IN DIAMOND DRILLING AT WATTLE DAM GOLD
MINE IN W.A.**

15 APRIL 2008

ASX CODE: RMS

RESULTS FROM VISIBLE GOLD IN DIAMOND DRILLING AT WATTLE DAM

- **1 metre @ 902g/t gold (29 oz /t) (uncut) returned from diamond drill hole WDDH0036 at 208 metres down hole depth.**
- **Confirms gold mineralisation present outside current resource envelope**

The Directors of Ramelius Resources are pleased to announce results from the recently identified mineralised zone within diamond drilling which intersected visible gold at Wattle Dam Gold Mine located 25 kms west of Kambalda in the Eastern Goldfields of WA.

Ramelius is now starting to encounter mineralisation outside the existing resource envelope and is highly confident that this has the potential to further extend gold production and mine life in the future.

A very significant intercept of 2 metres @ 452g/t gold (uncut) from 208 metres including 1 metre @ 902g/t gold (uncut) from 208 metres was returned from WDDH0036. The intercept lies outside of the current resource and therefore is not incorporated within the current mine plan. This intercept is approximately 10 metres up dip from the previous reported anomalous intercept within WDDH0022 (3 metres @ 23.2g/t gold) which is also located outside of the current resource.

A review of the current mine plan will be completed once all results are received from the completed RC drilling and the current resource definition diamond drilling.

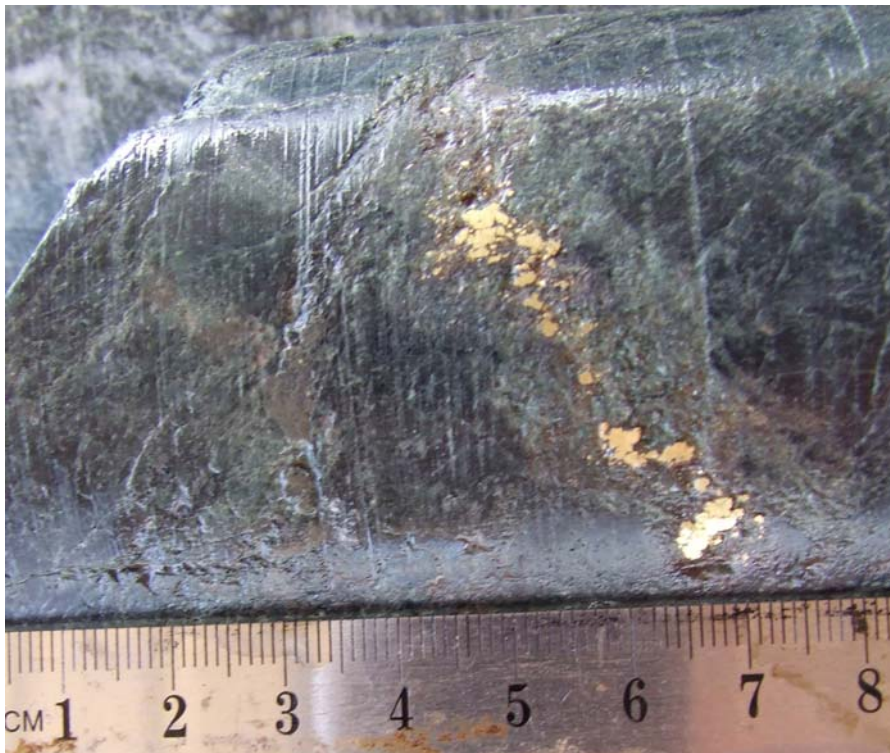


Figure 1 – Visible Gold Intersection - WDDH0036

TECHNICAL SUMMARY

Diamond Drilling

Since re-commencement of diamond drilling in February 2008, a total of 20 HQ diamond tails for 2,791 metres and 25 Precollars for 2,311 metres have been completed. The diamond drilling has been completed predominantly to further define and extend the current resource. Four holes (WDDH0019-0022) were completed to provide geotechnical information to allow for the design of a portal and decline for the proposed underground mining operation. All collar and assaying progress details are outline in Appendix 1.

As previously reported, visible gold was intersected within drill hole WDDH0036, (Figure 1). The zone incorporating the visible gold intercept was submitted for priority analysis. Results from this interval have now been received.

All recent significant results received from the drilling, including results from WDDH0036, are compiled in Table 1. This is based on a 1g/t cut-off and only intercepts containing greater than 4 gram metres gold are included.

Hole Number	Northing (Local)	Easting (Local)	RL (m)	Dip	Azimuth	Precollar Depth (m)	Total Depth (m)	From (m)	To (m)	Width (m)	Grade (g/t Au)
WDDH0026	8040	6067	340	-60	90	120	255.7	164	171	7	2.3
WDDH0036	8040	6067	340	-60	90	120	249.9	208	210	2	452
							Including	208	209	1	902

Table 1 – Wattle Dam Significant Results from Diamond Drilling

A very significant intercept of 2 metres @ 452g/t gold (uncut) from 208 metres including 1 metre @ 902g/t gold (uncut) from 208 metres was returned from WDDH0036. The intercept lies outside of the current resource and therefore is not incorporated within the current mine plan. This intercept is approximately 10 metres up dip from the previous reported anomalous intercept within WDDH0022 (3 metres @ 23.2g/t gold) which is also located outside of the current resource.

A review of the current mine plan will be completed once all results are received from the completed RC drilling and the current resource definition diamond drilling.

The intercept of 7 metres @ 2.3g/t gold from 164 metres, within WDDH0026, is interpreted to comprise Western Zone mineralisation which remains open to the north. Follow up RC drilling is required to further evaluate this anomalism.

All samples collected from the diamond drilling comprised HQ half core and were collected primarily over one metre intervals. The samples were submitted to Genalysis Laboratory Services Pty Ltd where they were dried, jaw crushed and pulverised prior to a 200 gram sub-sample being taken for Leachwell analysis. Any samples weighing over 3 kilograms after jaw crushing was split prior to pulverization. All drill core has been geologically and structurally logged.

RAMELIUS RESOURCES LIMITED

ACN 001 717 540

RC Drilling

As previously reported visible gold was intersected within drill hole WDRC315 from a program of RC drilling designed primarily further evaluate the up plunge from the high grade zone beneath the proposed cut back at the Wattle Dam Gold Mine. Analytical results from the zone incorporating the visible gold returned a significant intercept of 2 metres @ 561g/t gold (uncut) from 88 metres including 1 metre @ 1,114g/t gold from 88 metres.

75% of all results have now been received from the above RC drilling.

A further RC program comprising nine holes for 1,350 metres has been generated to further define the upper most part of the current underground resource. Drilling is expected to commence in April.

For further information please contact:

Mr. Joe Houldsworth
Managing Director
Ramelius Resources Limited
Ph. 08 9250 6644

Mr. Duncan Gordon
Investor Relations
Ramelius Resources Limited
Ph. 08 8232 8800
Mob. 0404006444

The Information in this report that relates to Exploration Results is based on information compiled by Matthew Svensson. Matthew Svensson is a Member of the Australian Institute of Geoscientists and has sufficient experience which is relevant to the style of mineralisation and type of deposit under consideration and to the activity he is undertaking to qualify as a Competent Person as defined in the 2004 Edition of the Australasian Code for Reporting on Exploration Results. Matthew Svensson is a full-time employee of the Company and consents to the inclusion in the report of the matters based on his information in the form and context in which it appears.

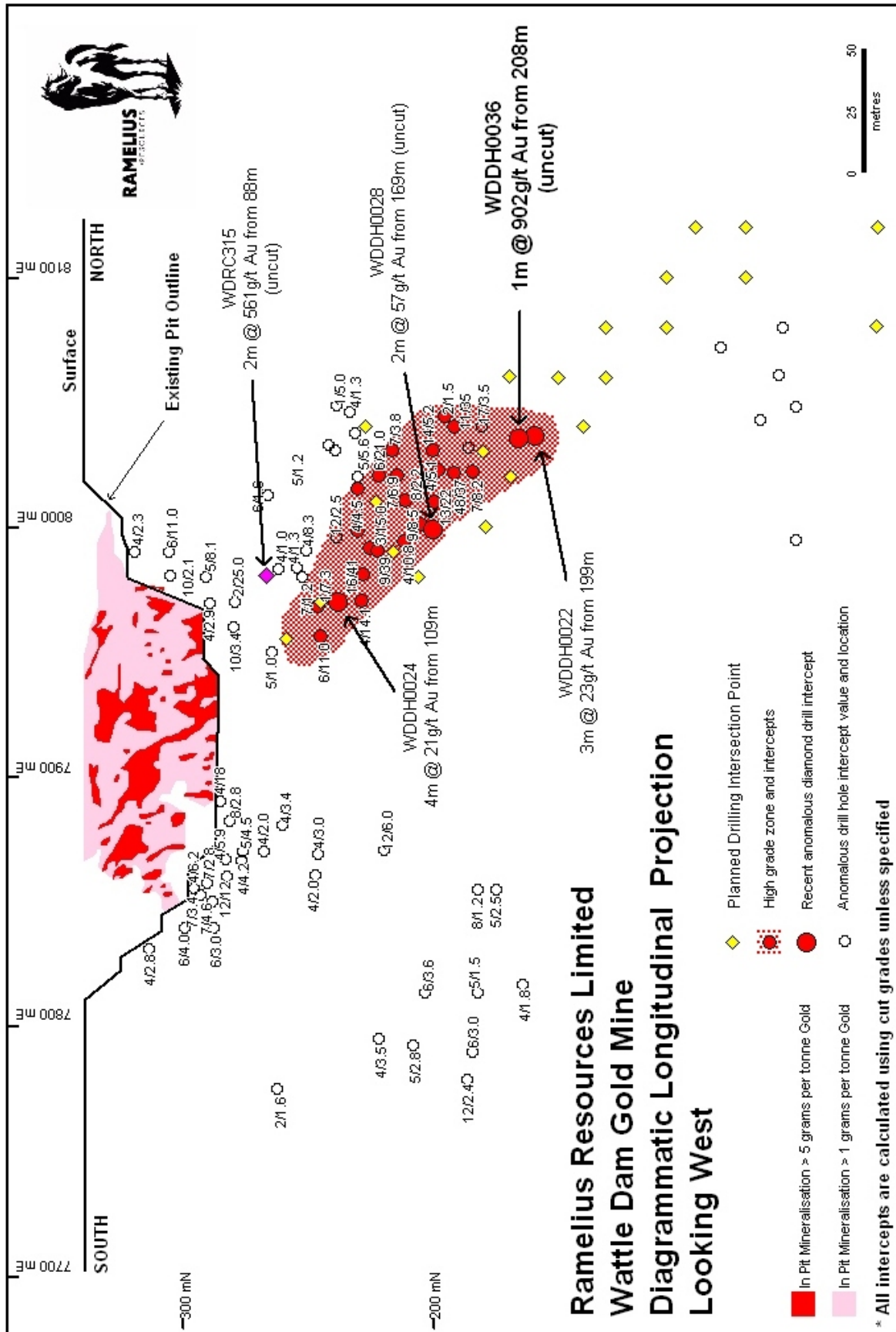


Figure 2 – Wattle Dam Diagrammatic Longitudinal Section

APPENDIX 1 - Wattle Dam Diamond Drilling Collar and Sampling Progress Details

Hole Number	Northing (Local)	Easting (Local)	RL (m)	Dip	Azimuth	Precollar Depth (m)	Total Depth (m)	Comments
WDDH0019	7880	6180	340	-50	90	25	110	All results received
WDDH0020	7920	6170	340	-54	90	25	125	All results received
WDDH0021	7960	6160	340	-54	90	30	130	All results received
WDDH0022	8020	6108	340	-63	84	12	230	All results received
WDDH0023	7950	6161	340	-55	90	30	110	All results received
WDDH0024	7970	6153	340	-60	90	40	140	All results received
WDDH0025	7980	6131	340	-60	90	90	220	Partial Results Received
WDDH0026	8040	6067	340	-60	90	120	255.7	PC Results Pending
WDDH0027	7990	6138	340	-60	90	116	171.8	PC Results Pending
WDDH0028	8000	6115	340	-60	90	150	201.5	All results received
WDDH0029	8120	5958	340	-60	90	90	390.7	Diamond Results Pending
WDDH0030	8010	6138	340	-60	90	100	180.7	Partial Results Received
WDDH0031	8020	6108	340	-63	87	120	230*	Diamond Tail Pending
WDDH0032	8020	6094	340	-60	92	160	255.6	Diamond Results Pending
WDDH0033	8080	6030	340	-60	90	120	270*	Diamond Tail Pending
WDDH0034	8080	5975	340	-60	90	90	357.2	Diamond Tail In Progress
WDDH0035	8100	6000	340	-60	90	150	330*	Diamond Tail Pending
WDDH0036	8040	6067	340	-60	90	120	249.9	Partial Results Received
WDDH0037	8040	6067	340	-60	90	105	270.7	Partial Results Received
WDDH0038	8020	6088	340	-60	90	95	261.6	Partial Results Received
WDDH0039	8080	5975	340	-60	90	135	470*	Diamond Tail Pending
WDDH0040	8100	5995	340	-60	90	135	465.7	Diamond Results Pending
WDDH0041	8120	5918	340	-60	90	90	550*	Diamond Tail Pending
WDDH0042	8040	6120	340	-60	90	115	180.7	Diamond Results Pending
WDDH0043	7980	6132	340	-60	90	48	180	Partial Results Received