

**RAMELIUS RESOURCES LIMITED**

ACN 001 717 540

+



140 Greenhill Road, Unley SA 5061  
GPO Box 1373, Adelaide SA 5001  
DX 52003, Unley  
Telephone (08) 8373 6473 / (08) 8373 5588  
Facsimile (08) 8373 5917

*31 October 2008*

General Manager  
The Company Announcements Office  
ASX Limited  
PO Box H224  
Australia Square  
Sydney NSW 121

Dear Sir/Madam,

***For Immediate Release***

**RAMELIUS RESOURCES LIMITED**

ACN 001 717 540

**ASX RELEASE – VISIBLE GOLD AT DEPTH IN DIAMOND  
DRILLING AT WATTLE DAM**

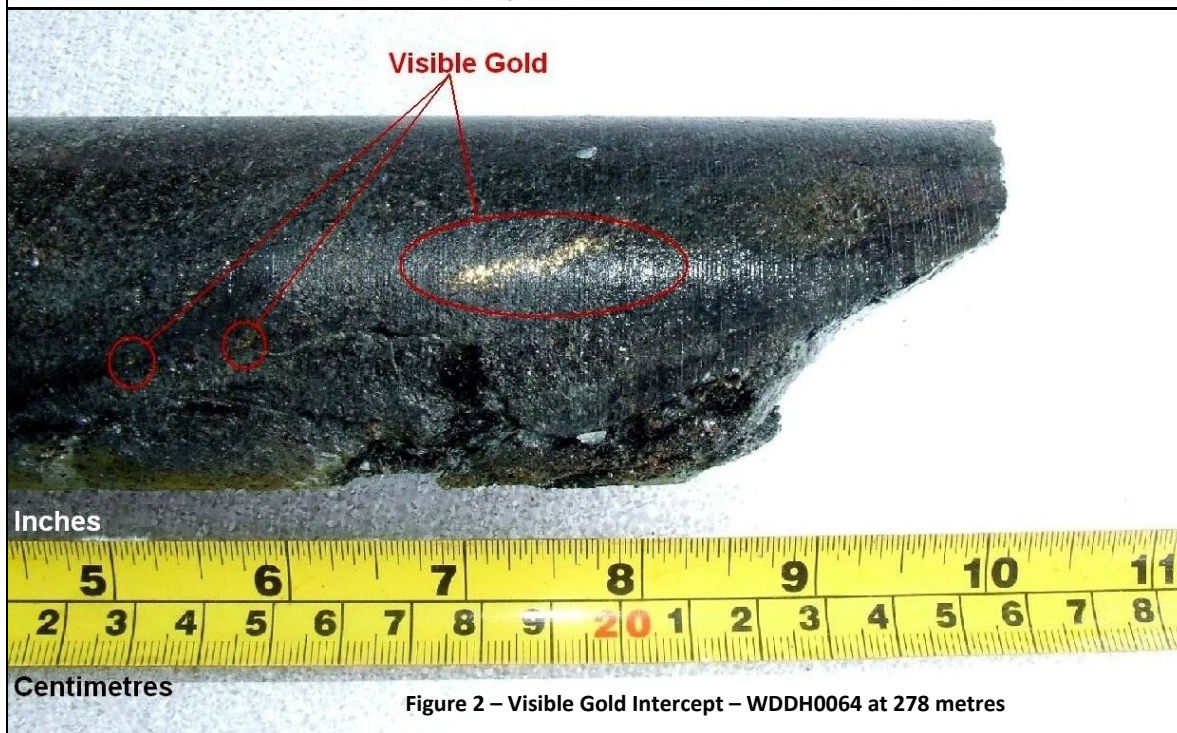
**31 OCTOBER 2008**

**ASX CODE: RMS**

**VISIBLE GOLD AT DEPTH IN DIAMOND DRILLING AT WATTLE DAM**

Ramelius Resources Limited is pleased to announce that visible gold has been discovered in an extensional diamond drill hole at Wattle Dam Gold Mine, 25 km South West of Kambalda in Western Australia. A highlight from the drilling program to date includes:

- **Visible gold** in Diamond drill hole WDDH0064 at depths of 274 metres and 278 metres down hole which is within a 13 metre wide zone of alteration - assays pending. These intercepts are located approximately **65 metres below the current mine plan**. Photographs of the core are shown below.



These intercepts further enhance the Company's view that the high grade zone at Wattle Dam continues well below the current resource area. Further drilling to test this extension of the high grade zone will be done over the coming months.

### **Diamond Drilling – Technical Summary**

A drill program comprising 7 diamond drill holes for 1,985 metres is currently underway at the Wattle Dam Gold Mine.

The focus of this drill program is to achieve adequate drill density, confirm mineralised interpretations and test strike and depth extensions in the immediate area where underground operations are to begin under the north end of the pit down to 150mRL.

Visible gold has been identified within diamond drill hole WDDH0064, associated with a zone of chlorite / biotite altered ultramafic rock, (Figures 1 & 2). The intercepts are located 40 metres down dip and 15 metres along strike to the north of the previously announced visible gold intercept within WDDH0056, which returned a significant intercept of 3 metres at 229 g/t gold from 253 metres down hole including 0.16 metres at 4,288 g/t (uncut) from 254.46 metres (Figure 4).

Results from the zone comprising the visible gold are expected within approximately 14 days.

Additional drilling is currently being planned to follow up the visible gold intersections, which will be completed in the coming month.

### **Wattle Dam Mining Update**

The cut-back development at Wattle Dam has now progressed down to the 300mRL (40 metres below surface).

High grade gold ore has been encountered at the southern end of the pit from the 305mRL (Figure 3) and is expected to be reflected in mill feed grades within the current quarter.



Figure 3 – High Grade Ore at 305mRL

The Information in this report that relates to Exploration Results is based on information compiled by Matthew Svensson.

Matthew Svensson is a Member of the Australian Institute of Geoscientists and has sufficient experience which is relevant to the style of mineralisation and type of deposit under consideration and to the activity he is undertaking to qualify as a Competent Person as defined in the 2004 Edition of the Australasian Code for Reporting on Exploration Results. Matthew Svensson is a full-time employee of the company and consents to the inclusion in the report of the matters based on his information in the form and context in which it appears.

**For further information please contact:**

**Mr. Joe Houldsworth**  
**Managing Director**  
**Ramelius Resources Limited**  
**Ph. 08 9250 6644**

**Mr. Duncan Gordon**  
**Investor Relations**  
**Ramelius Resources Limited**  
**Ph. 08 8232 8800**  
**Mob. 0404006444**

