

13 August 2009

#### ISSUED CAPITAL

Ordinary Shares: 219M  
Options: 18.45M

#### DIRECTORS

Chairman:  
Robert Kennedy  
Non Executive Directors:  
Reg Nelson  
Kevin Lines  
Joe Houldsworth  
Chief Executive Officer:  
Ian Gordon

[www.rameliusresources.com.au](http://www.rameliusresources.com.au)  
[info@rameliusresources.com.au](mailto:info@rameliusresources.com.au)

#### RAMELIUS RESOURCES LTD

##### Registered Office

140 Greenhill Road  
Unley Adelaide  
South Australia 5061  
Tel +61 8 8373 6473  
Fax +61 8 8373 5917

##### Exploration Office

Suite 3  
14 The Avenue  
Midland WA 6056  
Tel 08 9250 6644  
Fax 08 9250 6699

## Drilling Update

### Highlights

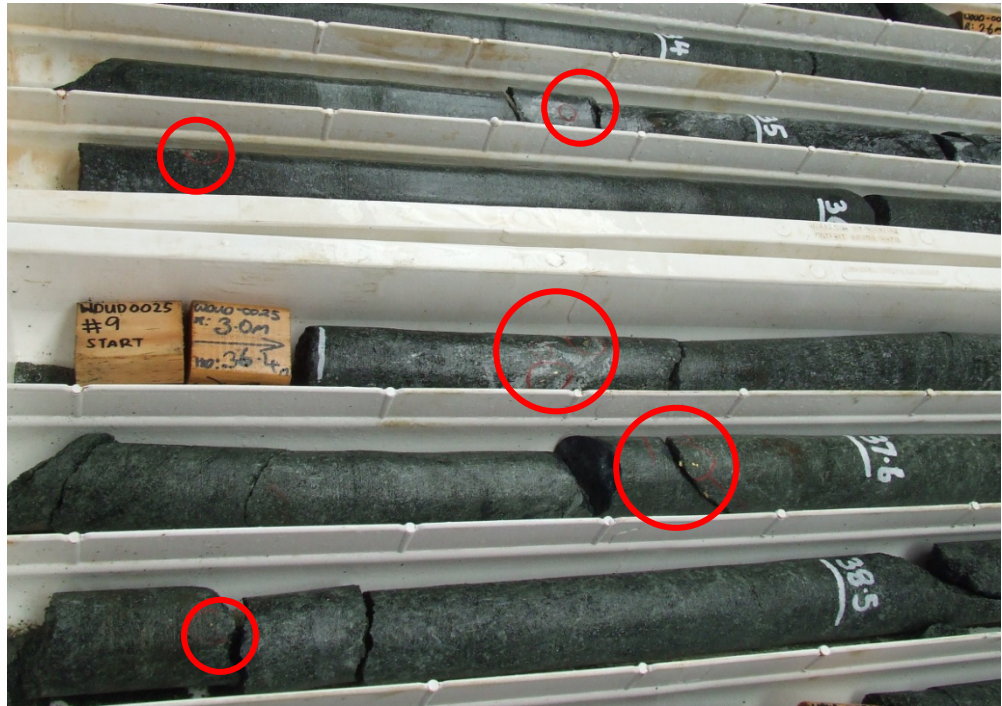
- Additional assay results received from diamond drilling program at Wattle Dam including 6 metres @ 65.8 g/t Au from 33 metres down hole in WDUD0025
- Results confirm the high-grade nature of the Wattle Dam orebody within the top of the underground mine plan

### In Pit and Underground Diamond Drilling

Further to the Company's release on Monday 10 August 2009, Ramelius Resources wishes to advise the market of further detailed information relating to these results and includes further significant assay data received. Infill diamond drilling at the top of the Wattle Dam resource has achieved excellent high grade gold results. Drilling in this area has now been completed on a **10 by 10 metre pattern**, where the first mining will be undertaken, and demonstrates the consistent high grade nature of the resource. In addition, previous RC holes WDRC0289 (16 metres at 482 g/t Au) and WDRC0290 (9 metres at 454 g/t Au) are also within this portion of the mine plan.

Below is a list of higher grade intersections received to date from this program:

- WDDH0076 - 4 metres at 20.2 g/t Au from 75 metres
- WDDH0077 - 9 metres at 32.3 g/t Au from 39 metres
- WDDH0079 - 3 metres at 138.9 g/t Au from 37 metres
- WDDH0081 - 5 metres at 75.8 g/t Au from 37 metres
- WDUD0010 - 0.6 metres at 819 g/t Au from 28.9 metres
- WDUD0011 - 7 metres at 36.9 g/t Au from 28 metres
- WDUD0015 - 6 metres at 5.2 g/t Au from 19 metres
- WDUD0019 - 4 metres at 9.2 g/t Au from 18 metres
- WDUD0021 - 11 metres at 6 g/t Au from 18 metres
- WDUD0022 - 1 metre at 37.8 g/t Au from 26 metres
- WDUD0025 - 6 metres at 65.8 g/t Au from 33 metres



Photograph 1: Continuous core from WDUD0025 showing visible gold (results shown above)

## ***In Pit and Underground Diamond Drilling at Wattle Dam***

### **Technical Summary**

#### **Wattle Dam Infill Diamond Drilling**

A total of 34 diamond drill holes for 2,396.4 metres have been completed as part of an infill drill program targeting the upper most portion of the current underground resource and extensions to the north and south. Of the completed holes, a total of 7 and 4 drill holes were drilled to test for southern and northern extensions of the current resource respectively. The completed drilling results in a drill spacing of 10 metres x 10 metres within the upper most portion of the current resource. The drilling has been completed both from the base of the open pit (WDDH0072-0077, WDDH0079-0083) and from and adjacent to the 241RL crosscut (WDUD0010-0032).

The drilling has returned highly significant results from intersected biotite/chlorite±sulphide altered ultramafic and interflow sediments. Visible gold has been intersected within the altered zones within several of the holes. All significant results returned from the drill program are tabulated below. This is based on a 0.5g/t lower cut-off with a maximum of 2 metres internal dilution and only intercepts containing greater than 8 gram metres gold are included.



The previously reported visible gold intercepts within WDUD0025 has returned highly significant results including 6 metres at 65.8g/t gold from 33 metres including two 0.4 metre samples returning results greater than 250g/t Au. Results from several of the completed drill holes are pending (WDUD0026-0032). All samples collected from the diamond drilling comprised LTK60 full core (WDUD prefix) or HQ half core (WDDH prefix) and were collected over intervals of 0.2 – 1.0 metres. The samples were submitted to SGS Laboratory Services Pty Ltd in Kalgoorlie where they were dried, crushed and pulverised prior to a 500 gram sub-sample being taken for Leachwell analysis. All drill cores have been geologically and structurally logged. Collar and assay progress details from the completed diamond drilling are outlined in Appendix 1. All reported intercepts are recorded as down hole intervals. The underground resource dips vertically in the area of infill drilling.

### **Wattle Dam Underground Exploration Drilling**

A total of four underground exploration diamond drill holes for 674.1 metres have been completed to evaluate significant intercepts towards the southern end of the open pit at depth including 8 metres at 8.7g/t gold from 134 metres. All results are pending from this drilling.

A further six underground diamond drill holes are planned to test the area resulting in a final drill spacing of 40 metres x 40 metres.

**For further information please contact:**

**Mr. Ian Gordon**  
Chief Executive Officer  
Ramelius Resources Limited  
Ph. 08 9250 6644  
Mob. 0448330160

**Mr. Duncan Gordon**  
Investor Relations  
Ramelius Resources Limited  
Ph. 08 8232 8800  
Mob. 0404006444

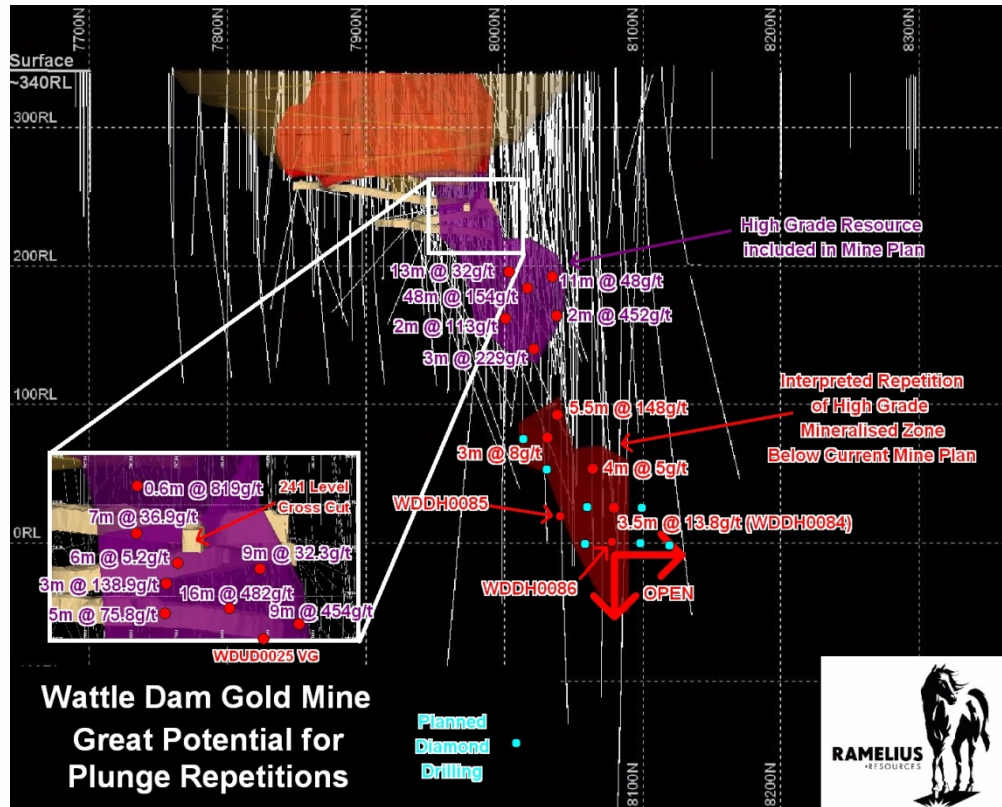


Figure: Wattle Dam Long Section Looking West showing higher grade Drill Intersections

The Information in this report that relates to Exploration Results is based on information compiled by Matthew Svensson. Matthew Svensson is a Member of the Australian Institute of Geoscientists and has sufficient experience which is relevant to the style of mineralisation and type of deposit under consideration and to the activity he is undertaking to qualify as a Competent Person as defined in the 2004 Edition of the Australasian Code for Reporting on Exploration Results. Matthew Svensson is a full-time employee of the company and consents to the inclusion in the report of the matters based on his information in the form and context in which it appears.



Wattle Dam In Pit and Underground Drill Results:

Hole Number	Easting (Local)	Northing (Local)	RL (m)	Dip	Azimuth	Total Depth (m)	From (m)	To (m)	Width	Grade
WDDH0076	6229	7959	261	-51	239	130.5	75.0	79.0	4	20.2
						Including	75.0	76.0	1	17
WDDH0077	6229	7961	261	-36	322	85.0	39.0	48.0	9	32.3
						Including	44.1	44.5	0.35	461
WDDH0079	6229	7959	261	-51	290	140.0	37.0	40.0	3	138.9
						Including	37.0	38.0	1	411
						140.0	89.0	107.0	18	2.3
WDDH0080	6229	7959	261	-51	286	139.5	87.0	90.0	3	3
						Including	89.0	90.0	1	6.7
WDDH0081	6229	7959	261	-59	293	160.6	37.0	42.0	5	75.8
						Including	38.0	39.0	1	351
							55.0	56.0	1	16
							122.0	128.0	6	2.6
WDUD0010	6190	7961	245	19	89	35.1	28.9	29.5	0.6	819
WDUD0011	6190	7960	244	-2	88	30.0	21.0	28.0	7	36.9
						Including	24.7	25.2	0.5	324
WDUD0015	6190	7960	244	-17	59	42.8	19.0	25.0	6	5.2
						Including	20.0	21.0	1	17.6
WDUD0017	6191	7961	242	-54	124	62.4	40.0	47.0	7	2.4
						Including	44.0	45.0	1	8.7
WDUD0019	6184	7989	243	-3	95	40.0	18.0	22.0	4	9.2
						Including	18.0	20.0	2	17.5
WDUD0020	6184	7989	243	14	106	48.0	25.0	29.0	4	3.7
						Including	0.0	1.0	1	10.2
WDUD0021	6184	7989	243	-12	106	43.4	18.0	29.0	11	6
						Including	21.0	22.0	1	26.5
						and	27.0	28.0	1	26.6
WDUD0022	6184	7988	242	-43	106	61.0	26.0	27.0	1	37.8
WDUD0025	6184	7989	242	-43	86	63.9	26.0	28.0	2	21.3
						Including	27.0	27.4	0.4	80
							33.0	39.0	6	65.8
						Including	36.0	36.4	0.4	497
					and	37.0	37.4	0.4	288	



Wattle Dam Resource Infill Drilling Drill Hole Collar Positions and Assay Status

HoleID	Easting (Local)	Northing (Local)	RL (m)	Dip	Azimuth	Total Depth (m)	Comments
WDDH0072	6229	7959	261	-19	264	35.9	Results Received
WDDH0073	6229	7959	261	-21	284	35.8	Results Received
WDDH0074	6229	7959	261	-45	274	66.3	Results Received
WDDH0075	6229	7959	261	-31	240	80.0	Results Received
WDDH0076	6229	7959	261	-51	239	130.5	Results Received
WDDH0077	6229	7961	261	-36	322	85.0	Results Received
WDDH0079	6229	7959	261	-51	290	140.0	Results Received
WDDH0080	6229	7959	261	-51	286	139.5	Results Received
WDDH0081	6229	7959	261	-59	293	160.6	Results Received
WDDH0082	6230	7959	261	-62	279	169.7	Results Received
WDDH0083	6230	7959	261	-42	216	140.1	Results Received
WDUD0010	6190	7961	245	19	89	35.1	Results Received
WDUD0011	6190	7960	244	-2	88	30.0	Results Received
WDUD0012	6190	7961	243	-18	90	32.8	Results Received
WDUD0013	6191	7961	242	-57	91	57.7	Results Received
WDUD0015	6190	7960	244	-17	59	42.8	Results Received
WDUD0016	6190	7960	244	-17	123	33.1	Results Received
WDUD0017	6191	7961	242	-54	124	62.4	Results Received
WDUD0018	6190	7960	244	-10	152	54.5	Results Received
WDUD0019	6184	7989	243	-3	95	40.0	Results Received
WDUD0020	6184	7989	243	14	106	48.0	Results Received
WDUD0021	6184	7989	243	-12	106	43.4	Results Received
WDUD0022	6184	7988	242	-43	106	61.0	Results Received
WDUD0023	6184	7988	242	-40	128	58.0	Results Received
WDUD0024	6184	7989	243	-13	86	44.4	Results Received
WDUD0025	6184	7989	242	-43	86	63.9	Results Received
WDUD0026	6185	7989	243	-11	64	50.3	Results Pending
WDUD0027	6184	7989	242	-41	64	64.8	Results Pending
WDUD0028	6184	7994	243	-10	54	56.1	Results Pending
WDUD0029	6185	7993	242	-38	60	72.8	Results Pending
WDUD0029a	6184	7994	243	-37	59	18.9	Results Pending
WDUD0030	6185	7993	242	-32	48	86.0	Results Pending
WDUD0031	6183	7994	243	-9	38	68.0	Results Pending
WDUD0032	6183	7994	243	-6	22	89.0	Results Pending



HoleID	Easting (Local)	Northing (Local)	RL (m)	Dip	Azimuth	Total Depth (m)	Comments
WDUD0001	6143	7851	257	0	77	141.1	Results Pending
WDUD0002	6143	7850	256	-34	100	155.0	Results Pending
WDUD0004	6143	7850	256	-29	79	198.0	Results Pending
WDUD0005	6143	7850	256	-47	100	180.0	Results Pending